



2024/25

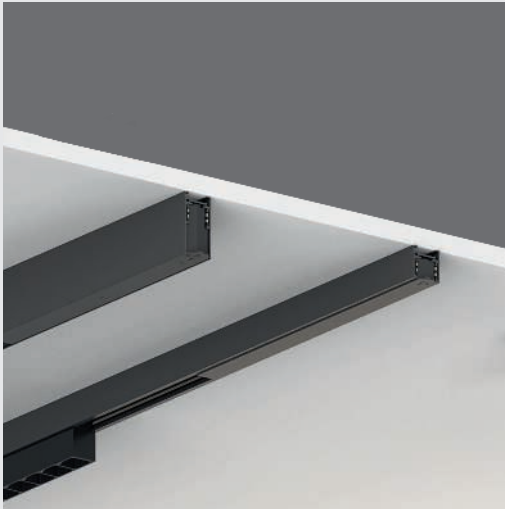
LINE48V

LINE48V



OVERVIEW

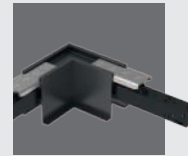
SURFACE-MOUNTED



SLIM TRACK
6

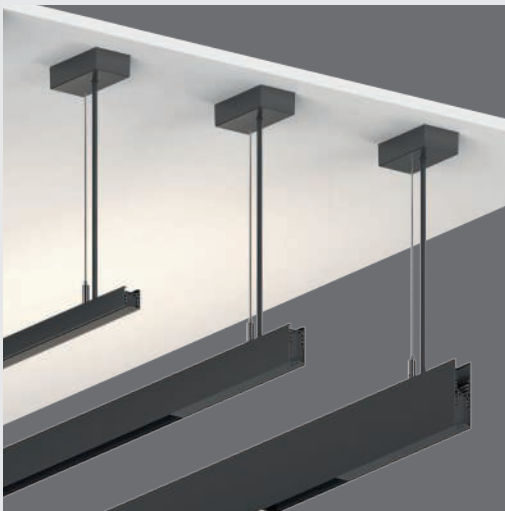


BASIC TRACK
10



ACCESSORIES
26

SUSPENDED



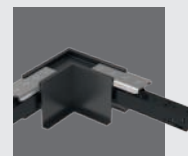
SLIM TRACK
6



BASIC TRACK
10

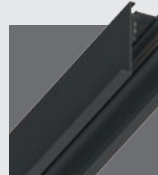


H-TRACK
14



ACCESSORIES
26

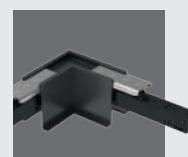
RECESSED



FRAME TRACK
18



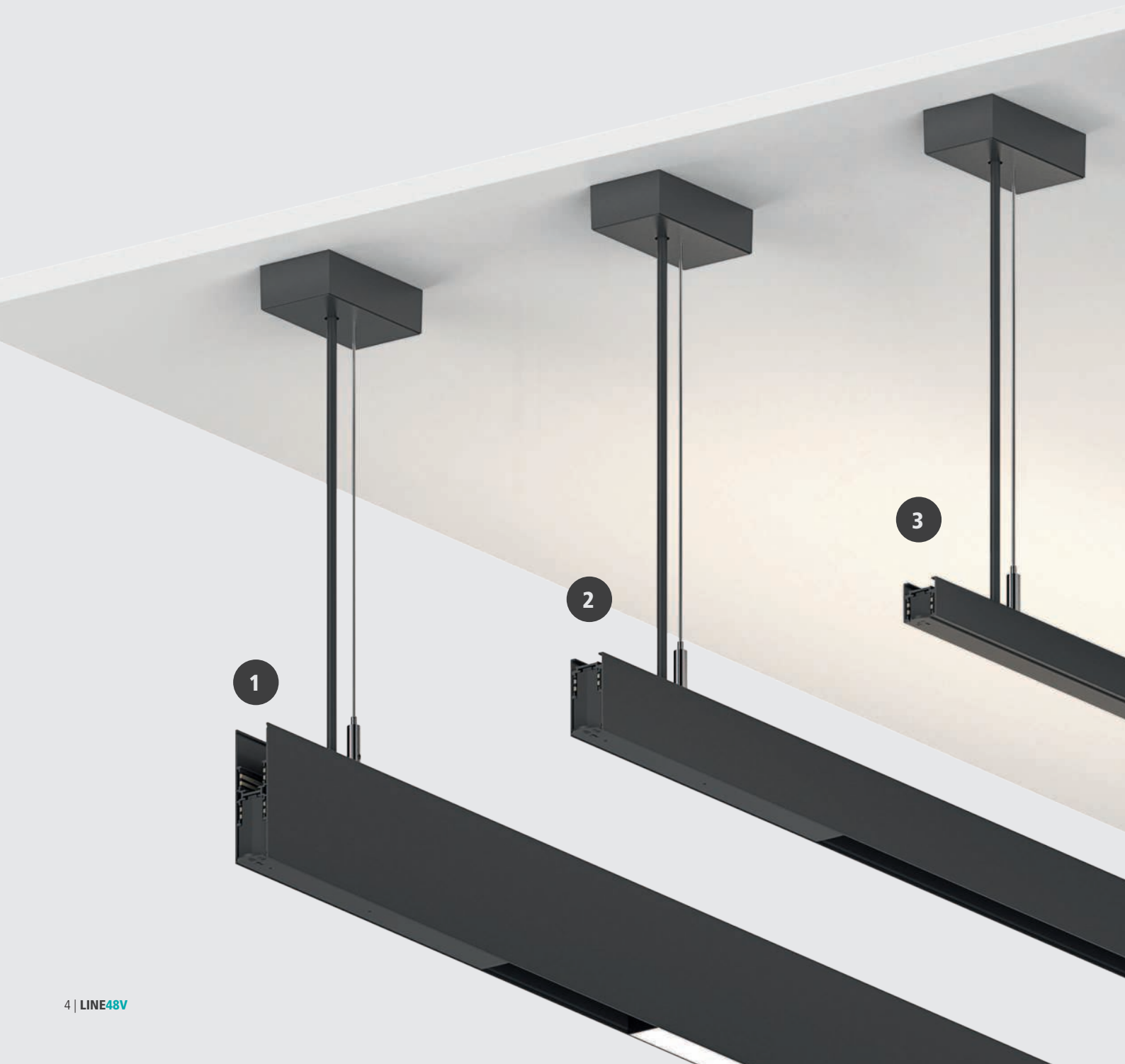
FRAMELESS TRACK
22



ACCESSORIES
26

LINE48V | TRACKS

1. **H-TRACK** SUSPENDED
2. **BASIC TRACK** SUSPENDED
3. **SLIM TRACK** SUSPENDED
4. **SLIM TRACK** SURFACE-MOUNTED
5. **BASIC TRACK** SURFACE-MOUNTED
6. **FRAME TRACK** RECESSED
7. **FRAMELESS TRACK** RECESSED





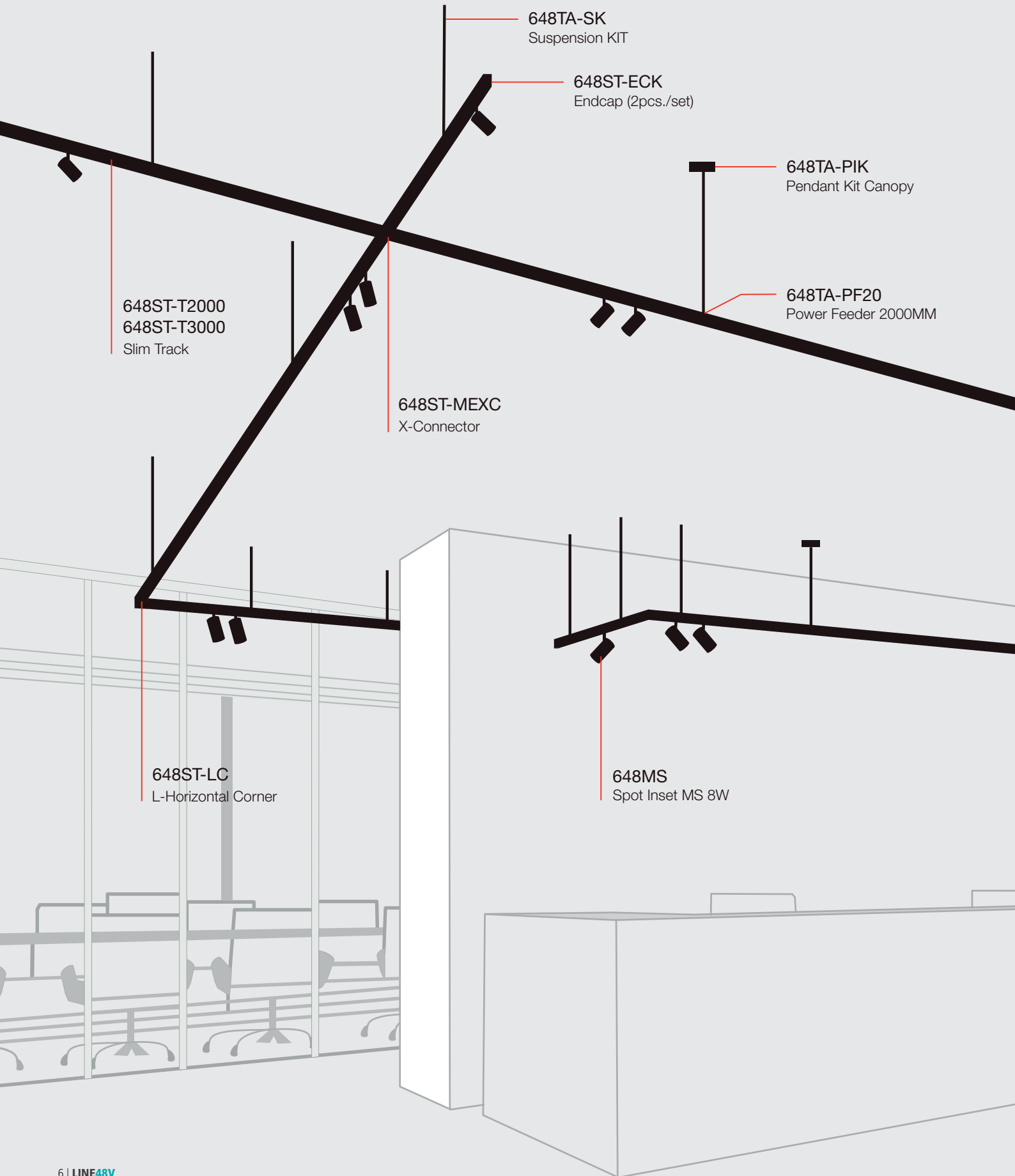
4

5

6

7

LINE48V | SLIM TRACK
SURFACE-MOUNTED OR SUSPENDED TRACK



648TA-SK
Suspension KIT

648ST-ECK
Endcap (2pcs./set)

648TA-PIK
Pendant Kit Canopy

648TA-PF20
Power Feeder 2000MM

648ST-T2000
648ST-T3000
Slim Track

648ST-MEXC
X-Connector

648ST-LC
L-Horizontal Corner

648MS
Spot Inset MS 8W



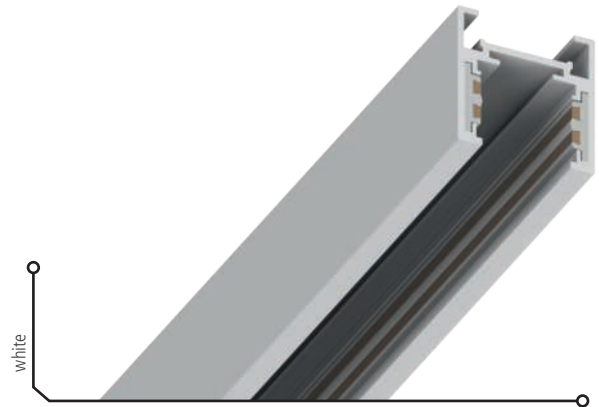
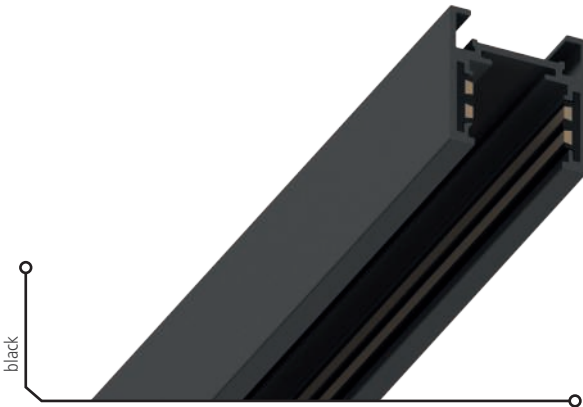
648TA-SECK
Straight Electrical Connector

648MD
Spot Inset MD 16W

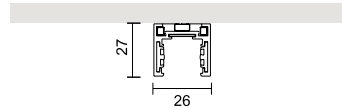
648ST-METC
T-Connector

LINE48V | SLIM TRACK

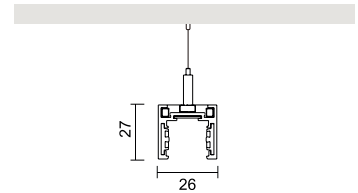
SURFACE-MOUNTED OR SUSPENDED TRACK



• SURFACE-MOUNTED



• SUSPENDED



DESCRIPTION

LINE48V is the modular 48V Low Voltage System solution with a sleek design approach, which is reduced to a 26mm wide extruded aluminium profile. Thanks to the reduced height of 27mm, the SLIM TRACK offers a minimalist, elegant design, that fits perfectly into the given architecture. All LINE48V tracks are available in a powder-coated black and white finish. The light inserts will be connected to the profile by a simple click-in mechanism, which offers a high degree of flexibility without using any tools. To extend the LINE48V system to its maximum, different connectors in I, L, T or X-shape are providing a numerous design options.



48 Vdc

COLOUR	HOUSING MATERIAL	DIMENSIONS (mm)	WEIGHT (kg)	MATERIAL NUMBER
■ black (RAL9005)	aluminium	L 2000 / W 26 / H 27	1,44	648ST-T2000-B
□ white (RAL9016)	aluminium	L 2000 / W 26 / H 27	1,44	648ST-T2000-W
■ black (RAL9005)	aluminium	L 3000 / W 26 / H 27	2,16	648ST-T3000-B
□ white (RAL9016)	aluminium	L 3000 / W 26 / H 27	2,16	648ST-T3000-W

ACCESSORIES

Corners incl. flexible continuous electrical kit.



648ST-ECK-B



648ST-LC-B



648ST-LVC-B



648ST-METC-B



648ST-MEXC-B



648ST-ECK-W



648ST-LC-W



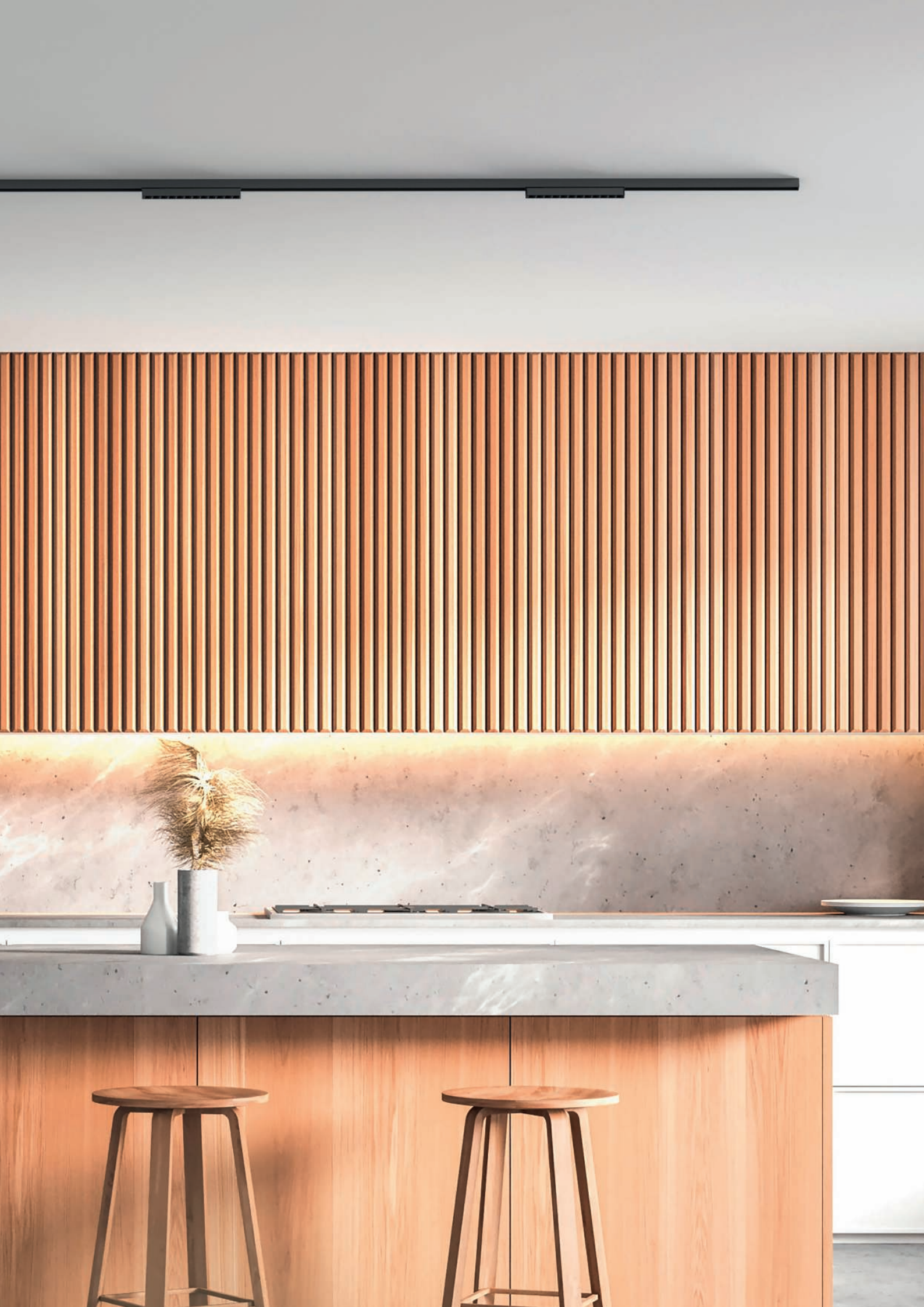
648ST-LVC-W



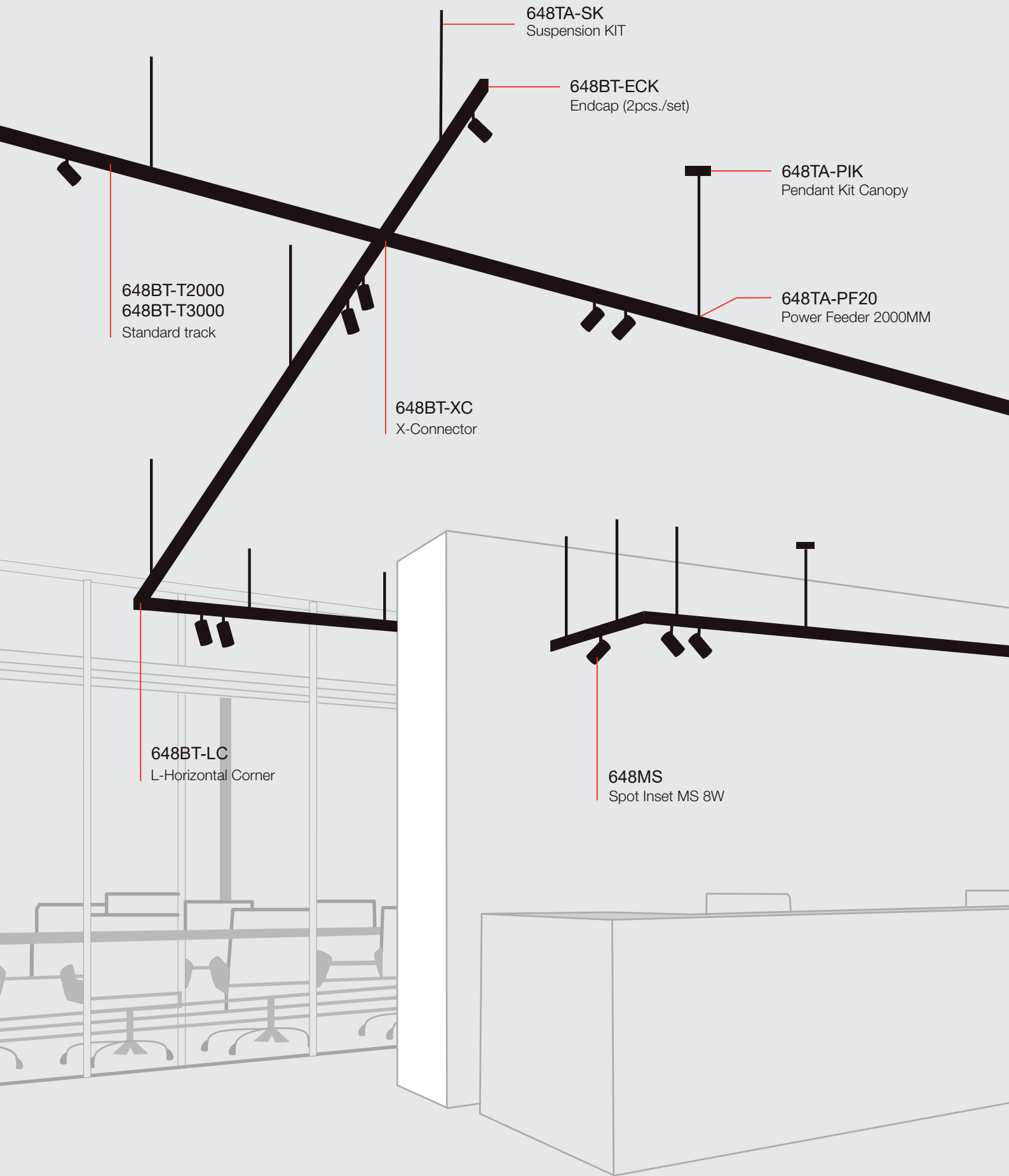
648ST-METC-W



648ST-MEXC-W



LINE48V | BASIC TRACK
SURFACE-MOUNTED OR SUSPENDED TRACK



648TA-SK
Suspension KIT

648BT-ECK
Endcap (2pcs./set)

648TA-PIK
Pendant Kit Canopy

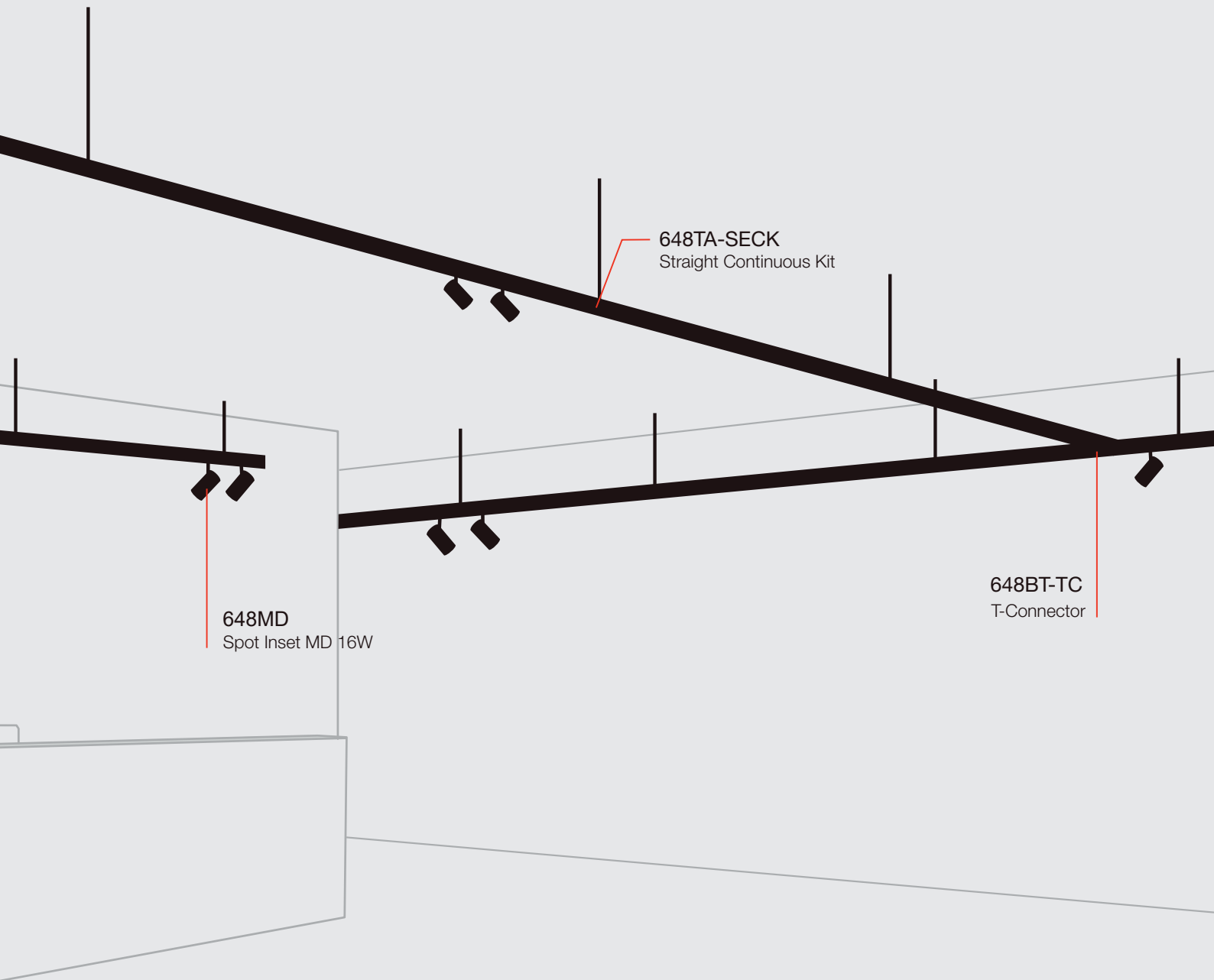
648TA-PF20
Power Feeder 2000MM

648BT-T2000
648BT-T3000
Standard track

648BT-XC
X-Connector

648BT-LC
L-Horizontal Corner

648MS
Spot Inset MS 8W



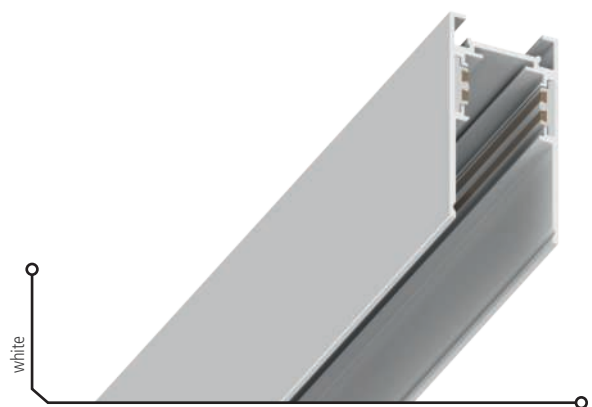
648TA-SECK
Straight Continuous Kit

648MD
Spot Inset MD 16W

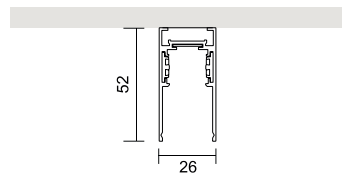
648BT-TC
T-Connector

LINE48V | BASIC TRACK

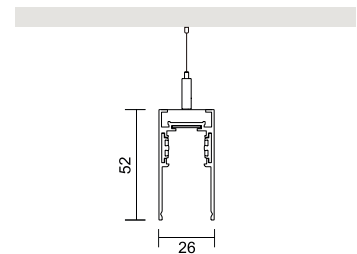
SURFACE-MOUNTED OR SUSPENDED TRACK



• SURFACE-MOUNTED



• SUSPENDED



DESCRIPTION

LINE48V is the modular 48V Low Voltage System solution with a sleek design approach, which is reduced to a 26mm wide extruded aluminium profile. The BASIC TRACK with the height of 52mm allows ideal solutions for pendant and surface-mounted installation. All LINE48V tracks are available in a powder-coated black and white finish. The light inserts will be connected to the profile by a simple click-in mechanism, which offers a high degree of flexibility without using any tools. To extend the LINE48V system to its maximum, different connectors in I, L, T or X-shape are providing a numerous design options.



COLOUR	HOUSING MATERIAL	DIMENSIONS (mm)	WEIGHT (kg)	MATERIAL NUMBER
■ black (RAL9005)	aluminium	L 2000 / W 26 / H 52	2,10	648BT-T2000-B
□ white (RAL9016)	aluminium	L 2000 / W 26 / H 52	2,10	648BT-T2000-W
■ black (RAL9005)	aluminium	L 3000 / W 26 / H 52	3,15	648BT-T3000-B
□ white (RAL9016)	aluminium	L 3000 / W 26 / H 52	3,15	648BT-T3000-W

ACCESSORIES

Corners incl. flexible continuous electrical kit.



648BT-ECK-B



648BT-LC-B



648BT-LVC-B



648BT-TC-B



648BT-XC-B



648TA-SK-B



648BT-ECK-W



648BT-LC-W



648BT-LVC-W



648BT-TC-W



648BT-XC-W



LINE48V | H-TRACK
SUSPENDED TRACK

648HT-T2000
648HT-T3000
Downward & upward lighting

648HT-ECK
Endcap (2pcs./set)

648HT-PK-H
Pendant Kit Canopy

648TA-PF20
Power Feeder 2000MM

648MS
Spot Inset MS 8W

648HT-LCPK
Linear Connector Inkl Pendant Kit

648HT-LMC
Linear Mechanical Connector

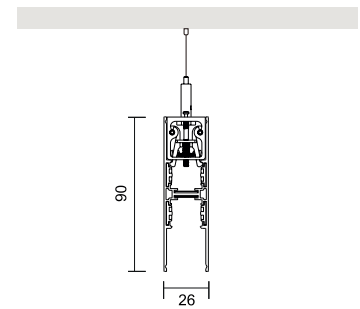
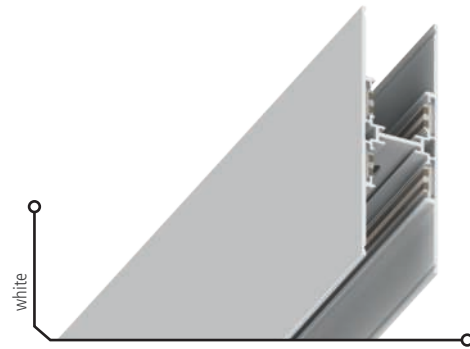
648HT-SK
Suspension Kit

648HT-FECK
Flex Electrical Connector

648MD
Spot Inset MD 16W

LINE48V | H-TRACK

SUSPENDED TRACK



DESCRIPTION

LINE48V is the modular 48V Low Voltage System solution with a sleek design approach, which is reduced to a 26mm wide extruded aluminium profile. The double-sided H-TRACK with the height of 90mm provides a revolutionised pendant solution, where all the insets can be installed from below and above. All LINE48V tracks are available in a powder-coated black and white finish. The light inserts will be connected to the profile by a simple click-in mechanism, which offers a high degree of flexibility without using any tools. To extend the LINE48V system to its maximum, straight line connectors are providing a numerous design options for the H-Track.

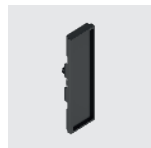


48 Vdc

COLOUR	HOUSING MATERIAL	DIMENSIONS (mm)	WEIGHT (kg)	MATERIAL NUMBER
■ black (RAL9005)	aluminium	L 2000 / W 26 / H 90	2,80	648HT-T2000-B
□ white (RAL9016)	aluminium	L 2000 / W 26 / H 90	2,80	648HT-T2000-W
■ black (RAL9005)	aluminium	L 3000 / W 26 / H 90	4,20	648HT-T3000-B
□ white (RAL9016)	aluminium	L 3000 / W 26 / H 90	4,20	648HT-T3000-W

ACCESSORIES

Corners incl. flexible continuous electrical kit.



648HT-ECK-B



648HT-LMC-B



648HT-LCPK



648HT-SK



648HT-PK-H-B

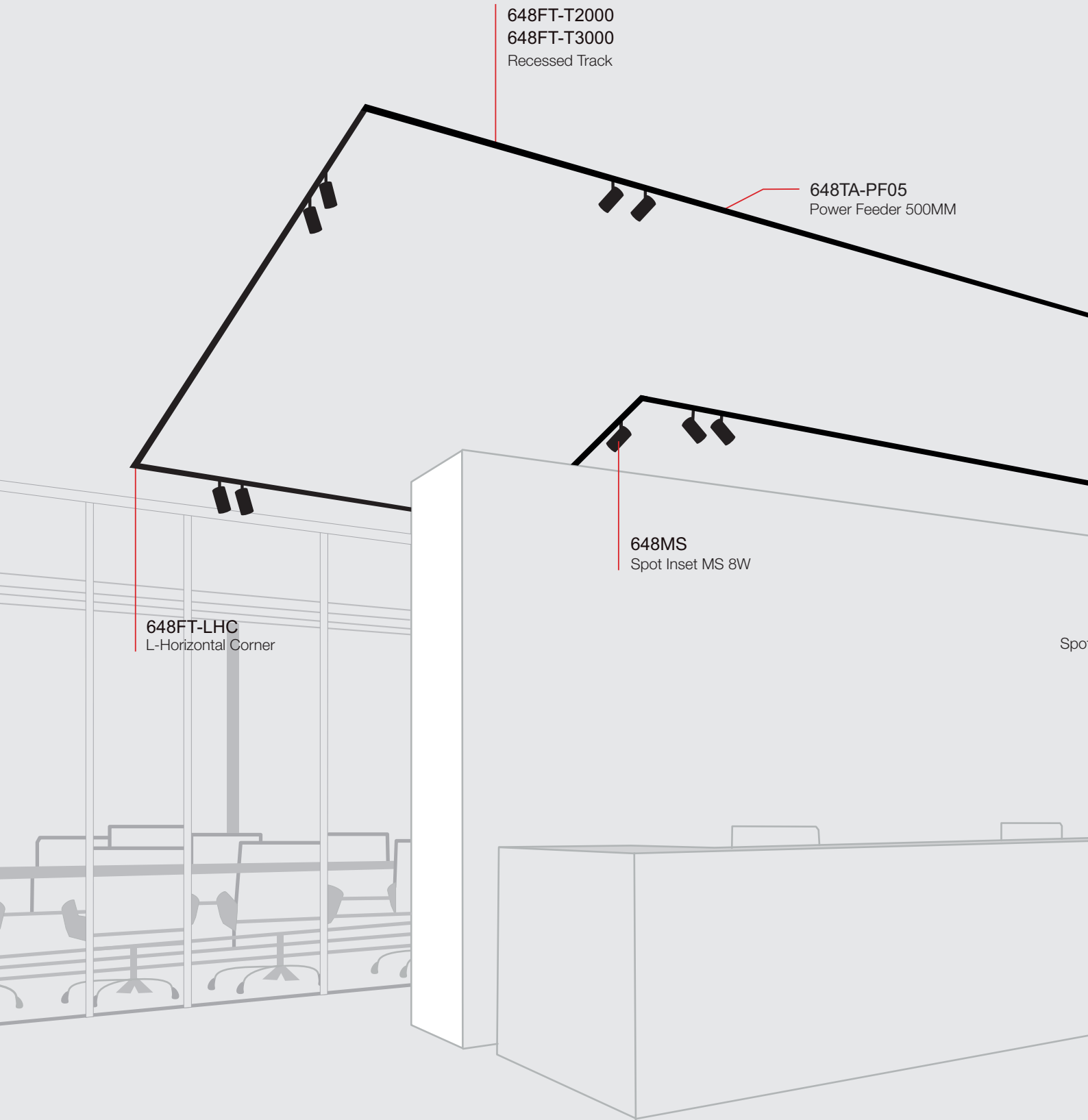


648HT-ECK-W



648HT-PK-H-W





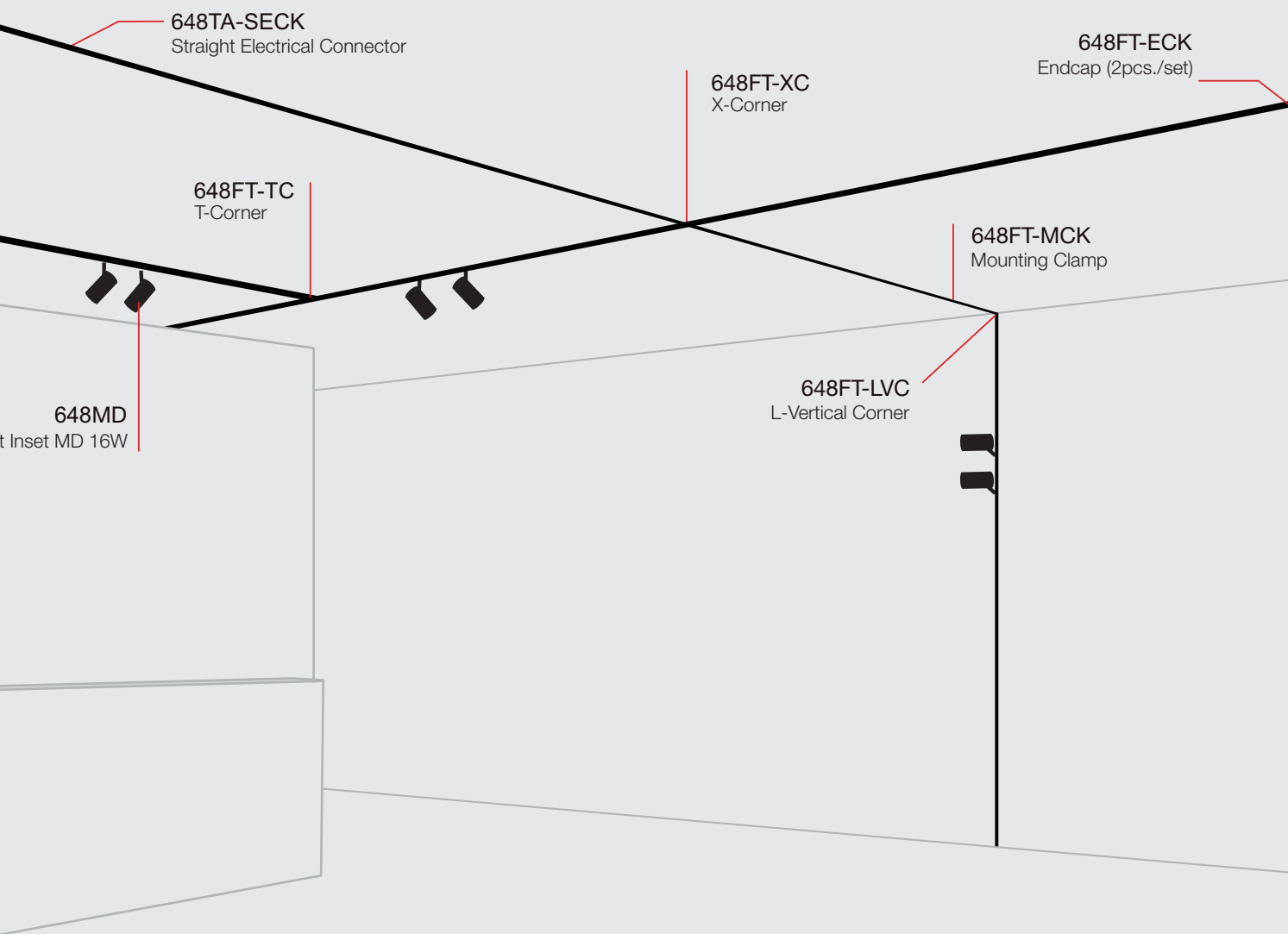
648FT-T2000
648FT-T3000
Recessed Track

648TA-PF05
Power Feeder 500MM

648MS
Spot Inset MS 8W

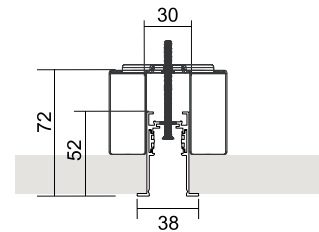
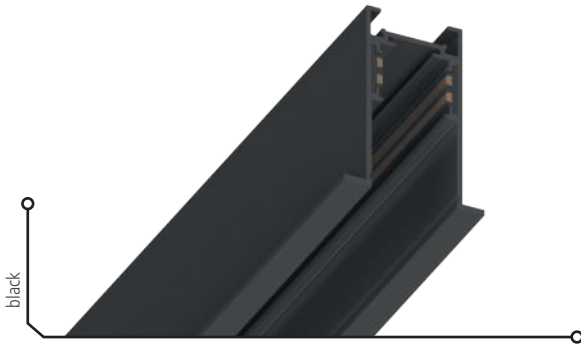
648FT-LHC
L-Horizontal Corner

Spot



LINE48V | FRAME TRACK

RECESSED TRACK



DESCRIPTION

LINE48V is the modular 48V Low Voltage System solution with a sleek design approach, which is reduced to a 26mm inner profile wide extruded aluminium profile. The FRAME TRACK with the outer profile width of 36mm allows ideal solutions for recessed installation. All LINE48V tracks are available in a powder-coated black and white finish. The light inserts will be connected to the profile by a simple click-in mechanism, which offers a high degree of flexibility without using any tools. To extend the LINE48V system to its maximum, different connectors in I, L, T or X-shape are providing a numerous design options.



COLOUR	HOUSING MATERIAL	DIMENSIONS (mm)	WEIGHT (kg)	MATERIAL NUMBER
■ black (RAL9005)	aluminium	L 2000 / W 38 / H 52	2,40	648FT-T2000-B
□ white (RAL9016)	aluminium	L 2000 / W 38 / H 52	2,40	648FT-T2000-W
■ black (RAL9005)	aluminium	L 3000 / W 38 / H 52	3,60	648FT-T3000-B
□ white (RAL9016)	aluminium	L 3000 / W 38 / H 52	3,60	648FT-T3000-W

ACCESSORIES

Corners incl. flexible continuous electrical kit.



648FT-ECK-B



648FT-LHC-B



648FT-LVC-B



648FT-TC-B



648FT-XC-B



648FT-MCK



648FT-ECK-W



648FT-LHC-W



648FT-LVC-W



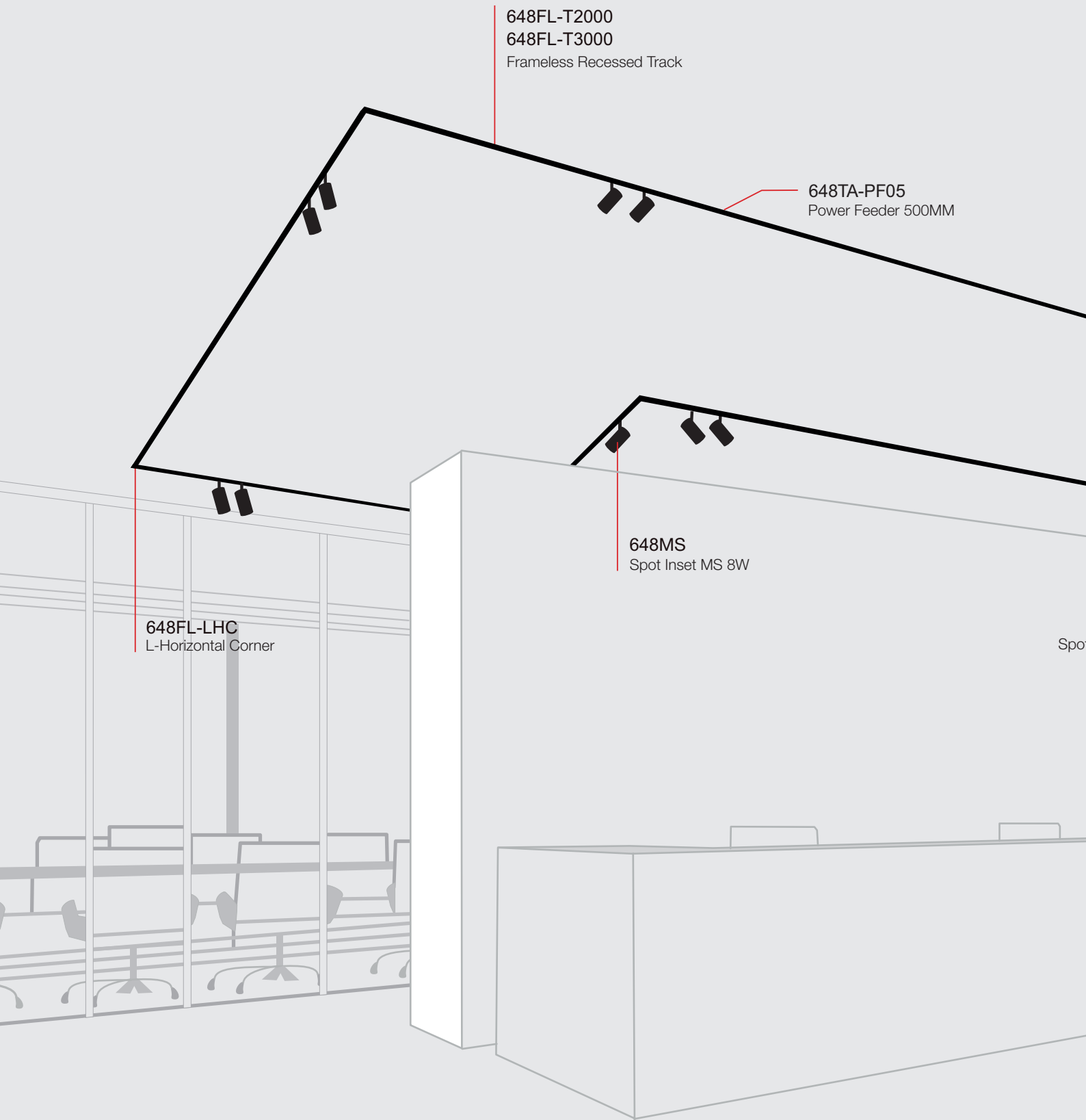
648FT-TC-W

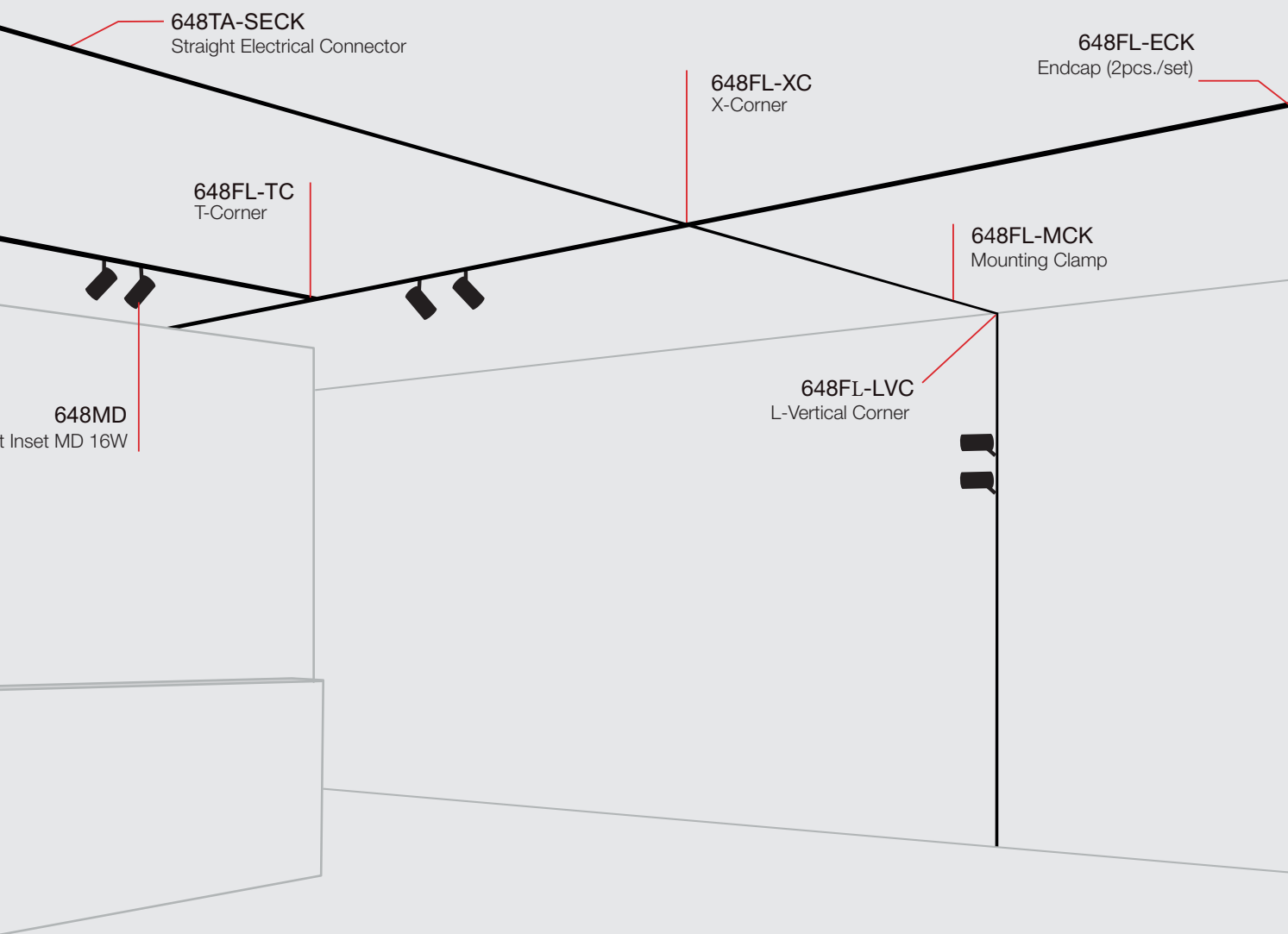


648FT-XC-W



LINE48V | FRAMELESS TRACK
RECESSED TRACK





648TA-SECK
Straight Electrical Connector

648FL-ECK
Endcap (2pcs./set)

648FL-XC
X-Corner

648FL-TC
T-Corner

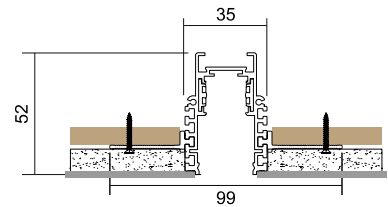
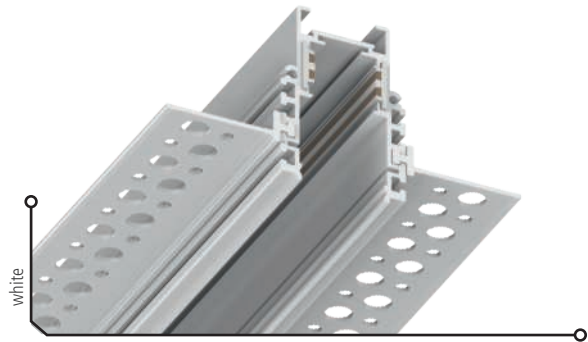
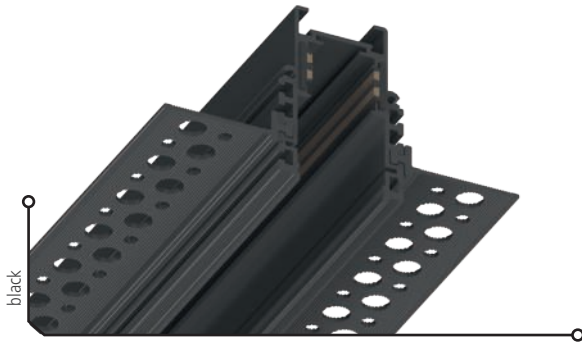
648FL-MCK
Mounting Clamp

648MD
Inset MD 16W

648FL-LVC
L-Vertical Corner

LINE48V | FRAMELESS TRACK

RECESSED TRACK



DESCRIPTION

LINE48V is the modular 48V Low Voltage System solution with a sleek design approach, which is reduced to a 26mm inner profile wide extruded aluminium profile. The FRAMELESS TRACK allows ideal solutions for trimless recessed installation with a seamless transition between the profile and the ceiling. All LINE48V tracks are available in a powder-coated black and white finish. The light inserts will be connected to the profile by a simple click-in mechanism, which offers a high degree of flexibility without using any tools. To extend the LINE48V system to its maximum, different connectors in I, L, T or X-shape are providing a numerous design options.



48 Vdc L+10mm 50 mm 40 mm

COLOUR	HOUSING MATERIAL	DIMENSIONS (mm)	WEIGHT (kg)	MATERIAL NUMBER
■ black (RAL9005)	aluminium	L 2000 / W 35 / H 52	2,60	648FL-T2000-B
□ white (RAL9016)	aluminium	L 2000 / W 35 / H 52	2,60	648FL-T2000-W
■ black (RAL9005)	aluminium	L 3000 / W 35 / H 52	3,80	648FL-T3000-B
□ white (RAL9016)	aluminium	L 3000 / W 35 / H 52	3,80	648FL-T3000-W

ACCESSORIES

Corners incl. flexible continuous electrical kit.



648FL-ECK-B



648FL-LHC-B



648FL-LVC-B



648FL-TC-B



648FL-XC-B



648FL-MCK



648FL-ECK-W



648FL-LHC-W



648FL-LVC-W



648FL-TC-W



648FL-XC-W



LINE48V | ACCESSORIES



TRACK TYPE	DESCRIPTION	COLOUR	HOUSING MATERIAL	DIMENSIONS (mm)	CABLE LENGTH (mm)	WEIGHT (kg)	MATERIAL NUMBER
SLIM TRACK 648ST	L-CONNECTOR HORIZONTAL	■ black (RAL9005)	aluminium	L 73 / W 73 / H 27	-	0,16	648ST-LC-B
	L-CONNECTOR HORIZONTAL	□ white (RAL9016)	aluminium	L 73 / W 73 / H 27	-	0,16	648ST-LC-W
	T-CONNECTOR	■ black (RAL9005)	aluminium	L 96 / W 61 / H 26	-	0,18	648ST-METC-B
	T-CONNECTOR	□ white (RAL9016)	aluminium	L 96 / W 61 / H 26	-	0,18	648ST-METC-W
	X-CONNECTOR	■ black (RAL9005)	aluminium	L 96 / W 96 / H 26	-	0,18	648ST-MEXC-B
	X-CONNECTOR	□ white (RAL9016)	aluminium	L 96 / W 96 / H 26	-	0,18	648ST-MEXC-W
	L-CORNER VERTICAL	■ black (RAL9005)	aluminium	L 100 / W 100 / H 26	-	0,16	648ST-LVC-B
	L-CORNER VERTICAL	□ white (RAL9016)	aluminium	L 100 / W 100 / H 26	-	0,16	648ST-LVC-W
	ENDCAP SET (2PCS/SET)	■ black (RAL9005)	plastic	L 27 / W 26 / H 11	-	0,03	648ST-ECK-B
	ENDCAP SET (2PCS/SET)	□ white (RAL9016)	plastic	L 27 / W 26 / H 11	-	0,03	648ST-ECK-W
	COVER	■ black (RAL9005)	plastic	L 2000 / W 18 / H 17	-	0,18	648ST-PC2000-B
	COVER	□ white (RAL9016)	plastic	L 2000 / W 18 / H 17	-	0,18	648ST-PC2000-W
BASIC TRACK 648BT	L-CONNECTOR HORIZONTAL	■ black (RAL9005)	aluminium	L 73 / W 73 / H 52	-	0,17	648BT-LC-B
	L-CONNECTOR HORIZONTAL	□ white (RAL9016)	aluminium	L 73 / W 73 / H 52	-	0,17	648BT-LC-W
	T-CONNECTOR	■ black (RAL9005)	aluminium	L 96 / W 61 / H 52	-	0,19	648BT-TC-B
	T-CONNECTOR	□ white (RAL9016)	aluminium	L 96 / W 61 / H 52	-	0,19	648BT-TC-W
	X-CONNECTOR	■ black (RAL9005)	aluminium	L 96 / W 96 / H 52	-	0,19	648BT-XC-B
	X-CONNECTOR	□ white (RAL9016)	aluminium	L 96 / W 96 / H 52	-	0,19	648BT-XC-W
	L-CORNER VERTICAL	■ black (RAL9005)	aluminium	L 80 / W 80 / H 26	-	0,17	648BT-LVC-B
	L-CORNER VERTICAL	□ white (RAL9016)	aluminium	L 80 / W 80 / H 26	-	0,17	648BT-LVC-W
	ENDCAP SET (2PCS/SET)	■ black (RAL9005)	plastic	L 52 / W 26 / H 11	-	0,04	648BT-ECK-B
	ENDCAP SET (2PCS/SET)	□ white (RAL9016)	plastic	L 52 / W 26 / H 11	-	0,04	648BT-ECK-W

CORNERS / CONNECTORS INCL. FLEXIBLE CONTINUOUS KIT ELECTRICAL

TRACK TYPE	DESCRIPTION	COLOUR	HOUSING MATERIAL	DIMENSIONS (mm)	CABLE LENGTH (mm)	WEIGHT (kg)	MATERIAL NUMBER
SLIM / BASIC TRACK	PENDANT SET (2PCS/SET)	■ black (RAL9005)	aluminium	L 33 / W 24 / H 8	-	0,07	648TA-SK-B
	SET (2PCS/SET) INCL. CANOPY	■ black (RAL9005)	metal	L 100 / W 55 / H 30	2000	0,31	648TA-PIK-B
	PENDANT SET (2PCS/SET) INCL. CANOPY	□ white (RAL9016)	metal	L 100 / W 55 / H 30	2000	0,31	648TA-PIK-W
	MECH. CONNECTION SET	■ black (RAL9005)	aluminium	L 60 / W 24 / H 2	-	0,08	648TA-MLC-B
H-TRACK 648HT	MECH. CONNECTION SET	■ black (RAL9005)	aluminium	L 115 / W 23 / H 25	-	0,08	648HT-LMC-B
	CONNECTOR WITH PENDANT SET	■ black (RAL9005)	aluminium	L 115 / W 23 / H 25	2000	0,09	648HT-LCPK
	PENDANT SET (2PCS/SET)	■ black (RAL9005)	aluminium	L 45 / W 23 / H 25	2000	0,09	648HT-SK
	PENDANT SET (2PCS/SET) INCL. CANOPY	■ black (RAL9005)	aluminium	L 45 / W 23 / H 25	2000	0,34	648HT-PK-H-B
	PENDANT SET (2PCS/SET) INCL. CANOPY	□ white (RAL9016)	aluminium	L 45 / W 23 / H 25	2000	0,34	648HT-PK-H-W
	FLEX. ELECTRICAL CONNECTION SET	■ black (RAL9005)	plastic	L 95 / W 17 / H 16	-	0,06	648HT-FECK-B
	FLEX. ELECTRICAL CONNECTION SET	□ white (RAL9016)	plastic	L 95 / W 17 / H 16	-	0,06	648HT-FECK-W
	ENDCAP SET (2PCS/SET)	■ black (RAL9005)	aluminium	L 90 / W 26 / H 15	-	0,05	648HT-ECK-B
	ENDCAP SET (2PCS/SET)	□ white (RAL9016)	aluminium	L 90 / W 26 / H 15	-	0,05	648HT-ECK-W
RECESSED FRAME TRACK 648FT	L-CORNER HORIZONTAL	■ black (RAL9005)	aluminium	L 80 / W 80 / H 52	-	0,33	648FT-LHC-B
	L-CORNER HORIZONTAL	□ white (RAL9016)	aluminium	L 80 / W 80 / H 52	-	0,33	648FT-LHC-W
	L-CORNER VERTICAL	■ black (RAL9005)	aluminium	L 80 / W 80 / H 38	-	0,33	648FT-LVC-B
	L-CORNER VERTICAL	□ white (RAL9016)	aluminium	L 80 / W 80 / H 38	-	0,33	648FT-LVC-W
	T-CONNECTOR	■ black (RAL9005)	aluminium	L 120 / W 80 / H 38	-	0,35	648FT-TC-B
	T-CONNECTOR	□ white (RAL9016)	aluminium	L 120 / W 80 / H 38	-	0,35	648FT-TC-W
	X-CONNECTOR	■ black (RAL9005)	aluminium	L 120 / W 120 / H 38	-	0,35	648FT-XC-B
	X-CONNECTOR	□ white (RAL9016)	aluminium	L 120 / W 120 / H 38	-	0,35	648FT-XC-W
	ENDCAP SET (2PCS/SET)	■ black (RAL9005)	plastic	L 38 / W 13 / H 52	-	0,04	648FT-ECK-B
	ENDCAP SET (2PCS/SET)	□ white (RAL9016)	plastic	L 38 / W 13 / H 52	-	0,04	648FT-ECK-W
	MOUNTING CLAMP (2PCS)	■ silver	aluminium	L 72 / W 20 / H 55	-	0,1	648FT-MCK
	RECESSED FRAMELESS TRACK 648FL	L-CORNER HORIZONTAL	■ black (RAL9005)	aluminium	L 100 / W 100 / H 52	-	0,33
L-CORNER HORIZONTAL		□ white (RAL9016)	aluminium	L 100 / W 100 / H 52	-	0,33	648FL-LHC-W
L-CORNER VERTICAL		■ black (RAL9005)	aluminium	L 100 / W 100 / H 52	-	0,33	648FL-LVC-B
L-CORNER VERTICAL		□ white (RAL9016)	aluminium	L 100 / W 100 / H 52	-	0,33	648FL-LVC-W
T-CONNECTOR		■ black (RAL9005)	aluminium	L 120 / W 100 / H 52	-	0,35	648FL-TC-B
T-CONNECTOR		□ white (RAL9016)	aluminium	L 120 / W 100 / H 52	-	0,35	648FL-TC-W
X-CONNECTOR		■ black (RAL9005)	aluminium	L 120 / W 120 / H 52	-	0,35	648FL-XC-B
X-CONNECTOR		□ white (RAL9016)	aluminium	L 120 / W 120 / H 52	-	0,35	648FL-XC-W
ENDCAP SET (2PCS/SET)		■ black (RAL9005)	plastic	L 56 / W 26 / H 2	-	0,04	648FL-ECK-B
ENDCAP SET (2PCS/SET)		□ white (RAL9016)	plastic	L 56 / W 26 / H 2	-	0,04	648FL-ECK-W
MOUNTING CLAMP (2PCS)		■ black (RAL9005)	aluminium	L 120 / W 36 / H 9	-	0,1	648FL-MCK
FOR ALL TRACKS		POWERFEEDER UNIT WITH CABLE	■ black (RAL9005)	plastic	L 97 / W 17 / H 16	500	0,05
	POWERFEEDER UNIT WITH CABLE	□ white (RAL9016)	plastic	L 97 / W 17 / H 16	500	0,05	648TA-PF05-W
	POWERFEEDER UNIT WITH CABLE	■ black (RAL9005)	plastic	L 97 / W 17 / H 16	2000	0,05	648TA-PF20-B
	POWERFEEDER UNIT WITH CABLE	□ white (RAL9016)	plastic	L 97 / W 17 / H 16	2000	0,05	648TA-PF20-W
	FLEXIBLE ELECTRICAL CONNECTION	■ black (RAL9005)	plastic	L 229 / W 16 / H 17	-	0,05	648TA-FECK-B
	FLEXIBLE ELECTRICAL CONNECTION SET	□ white (RAL9016)	plastic	L 229 / W 16 / H 17	-	0,05	648TA-FECK-W
	STRAIGHT ELECTRICAL CONNECTION SET	■ black (RAL9005)	plastic	L 144 / W 16 / H 17	-	0,05	648TA-SECK-B
	RIGID ELECTRICAL CONNECTION SET	□ white (RAL9016)	plastic	L 144 / W 16 / H 17	-	0,05	648TA-SECK-W
	COVER FOR 648BT/648HT/648FT/648FL TRACK	■ black (RAL9005)	aluminium	L 2000 / W 24 / H 5	-	0,17	648TA-AC2000-B
	COVER FOR 648BT/648HT/648FT/648FL TRACK	□ white (RAL9016)	aluminium	L 2000 / W 24 / H 6	-	0,17	648TA-AC2000-W

CORNERS / CONNECTORS INCL. FLEXIBLE CONTINUOUS KIT ELECTRICAL



LUMINAIRES



SPOT INSET MS

30



SPOT INSET MD

31



SPOT INSET MZ

32



SPOT INSET SF

33



SPOT INSET DS

34



SPOT INSET DD

38



LINE INSET LM

42



LINE INSET OM

43



LINE INSET MM

44



LINE INSET AM

45



PIEDALE PP

46



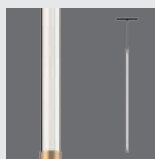
CANALELLO PC

48



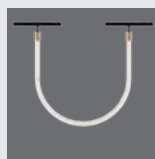
TORTORETO PT

50



ROBE INSET RS

51



ROBE INSET RU

52

DRIVERS



100 W

54



250 W

54



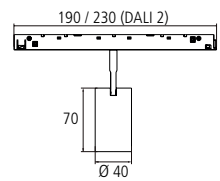
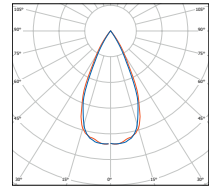
320 / 480 W

55



SIGNAL CONTROLLER

55

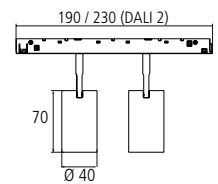
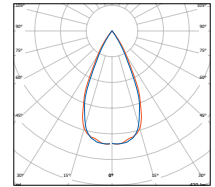


DESCRIPTION

The powerful and glare-free Single cylindrical Spotlight with Ø40mm diameter for the modular LINE48V Low Voltage promises a variety of different configurations options. The colour temperature is available in 2700K, 3000K and 4000K and can be adapted to your requirements with a colour rendering index >90. The light inserts will be connected to the profile by a simple click-in mechanism, which offers a high degree of flexibility without using any tools. To meet the requirements of professional lighting task, the Single Spotlight can be selected with on/off as well as with DALI drivers.

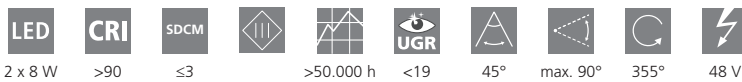
8 W	>90	≤3	>50.000 h	<19	45°	max. 90°	355°	48 V	

DIMMABLE	COLOUR	DIMENSIONS (mm)	COLOUR TEMP. (K)	LUMINOUS FLUX (lm)	WEIGHT (kg)	MATERIAL NUMBER
	■ black (RAL9005)	Ø 40 / L 190 / H 130	2700	395	0,17	648MS-459271-OOBLB
	□ white (RAL9016)	Ø 40 / L 190 / H 130	2700	395	0,17	648MS-459271-OOWHB
	■ black (RAL9005)	Ø 40 / L 190 / H 130	3000	586	0,17	648MS-459301-OOBLB
	□ white (RAL9016)	Ø 40 / L 190 / H 130	3000	586	0,17	648MS-459301-OOWHB
	■ black (RAL9005)	Ø 40 / L 190 / H 130	4000	655	0,17	648MS-459401-OOBLB
	□ white (RAL9016)	Ø 40 / L 190 / H 130	4000	655	0,17	648MS-459401-OOWHB
	■ black (RAL9005)	Ø 40 / L 230 / H 130	2700	395	0,17	648MS-459271-DDBLB
	□ white (RAL9016)	Ø 40 / L 230 / H 130	2700	395	0,17	648MS-459271-DDWHB
	■ black (RAL9005)	Ø 40 / L 230 / H 130	3000	586	0,17	648MS-459301-DDBLB
	□ white (RAL9016)	Ø 40 / L 230 / H 130	3000	586	0,17	648MS-459301-DDWHB
	■ black (RAL9005)	Ø 40 / L 230 / H 130	4000	655	0,17	648MS-459401-DDBLB
	□ white (RAL9016)	Ø 40 / L 230 / H 130	4000	655	0,17	648MS-459401-DDWHB

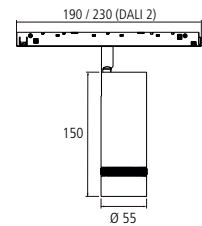
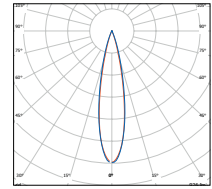


DESCRIPTION

The powerful and glare-free Double cylindrical Spotlight with Ø40mm diameter for the modular LINE48V Low Voltage promises a variety of different configurations options. The colour temperature is available in 2700K, 3000K and 4000K and can be adapted to your requirements with a colour rendering index >90. The light inserts will be connected to the profile by a simple click-in mechanism, which offers a high degree of flexibility without using any tools. To meet the requirements of professional lighting task, the Double Spotlight can be selected with on/off as well as with DALI drivers.



DIMMABLE	COLOUR	DIMENSIONS (mm)	COLOUR TEMP. (K)	LUMINOUS FLUX (lm)	WEIGHT (kg)	MATERIAL NUMBER
	■ black (RAL9005)	Ø 40 / L 190 / H 130	2700	2x395	0,43	648MD-459271-0OBLB
	□ white (RAL9016)	Ø 40 / L 190 / H 130	2700	2x395	0,43	648MD-459271-0OWH B
	■ black (RAL9005)	Ø 40 / L 190 / H 130	3000	2x 603	0,43	648MD-459301-0OBLB
	□ white (RAL9016)	Ø 40 / L 190 / H 130	3000	2x 603	0,43	648MD-459301-0OWH B
	■ black (RAL9005)	Ø 40 / L 190 / H 130	4000	2x 635	0,43	648MD-459401-0OBLB
	□ white (RAL9016)	Ø 40 / L 190 / H 130	4000	2x 635	0,43	648MD-459401-0OWH B
	■ black (RAL9005)	Ø 40 / L 230 / H 130	2700	2x395	0,43	648MD-459271-DDBLB
	□ white (RAL9016)	Ø 40 / L 230 / H 130	2700	2x395	0,43	648MD-459271-DDWH B
	■ black (RAL9005)	Ø 40 / L 230 / H 130	3000	2x 603	0,43	648MD-459301-DDBLB
	□ white (RAL9016)	Ø 40 / L 230 / H 130	3000	2x 603	0,43	648MD-459301-DDWH B
	■ black (RAL9005)	Ø 40 / L 230 / H 130	4000	2x 635	0,43	648MD-459401-DDBLB
	□ white (RAL9016)	Ø 40 / L 230 / H 130	4000	2x 635	0,43	648MD-459401-DDWH B

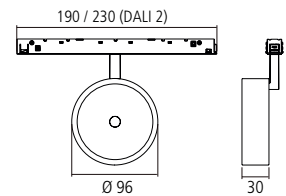
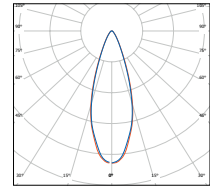


DESCRIPTION

The powerful and glare-free Single cylindrical Spotlight with Ø55mm diameter for the modular LINE48V Low Voltage promises a variety of different configurations options. The colour temperature is available in 2700K, 3000K and 4000K and can be adapted to your requirements with a colour rendering index >90. LINE 48V Spot Inset MZ is complemented by a variant with an optical zoom, which makes it possible to make a manual adjustment of the beam characteristic at any time. The light inserts will be connected to the profile by a simple click-in mechanism, which offers a high degree of flexibility without using any tools. To meet the requirements of professional lighting task, the Single Spotlight can be selected with on/off as well as with DALI drivers.

10 W	>90	≤3	>50.000 h	20-40°	max 90°	355°	48 V	

DIMMABLE	COLOUR	DIMENSIONS (mm)	COLOUR TEMP. (K)	LUMINOUS FLUX (lm)	WEIGHT (kg)	MATERIAL NUMBER
	■ black (RAL9005)	Ø 55 / L 190 / H 200	2700	871	0,4	648MZ-Z09271-OOBLB
	□ white (RAL9016)	Ø 55 / L 190 / H 200	2700	871	0,4	648MZ-Z09271-OOWHB
	■ black (RAL9005)	Ø 55 / L 190 / H 200	3000	926	0,4	648MZ-Z09301-OOBLB
	□ white (RAL9016)	Ø 55 / L 190 / H 200	3000	926	0,4	648MZ-Z09301-OOWHB
	■ black (RAL9005)	Ø 55 / L 190 / H 200	4000	966	0,4	648MZ-Z09401-OOBLB
	□ white (RAL9016)	Ø 55 / L 190 / H 200	4000	966	0,4	648MZ-Z09401-OOWHB
	■ black (RAL9005)	Ø 55 / L 230 / H 200	2700	871	0,4	648MZ-Z09271-DDBLB
	□ white (RAL9016)	Ø 55 / L 230 / H 200	2700	871	0,4	648MZ-Z09271-DDWHB
	■ black (RAL9005)	Ø 55 / L 230 / H 200	3000	926	0,4	648MZ-Z09301-DDBLB
	□ white (RAL9016)	Ø 55 / L 230 / H 200	3000	926	0,4	648MZ-Z09301-DDWHB
	■ black (RAL9005)	Ø 55 / L 230 / H 200	4000	966	0,4	648MZ-Z09401-DDBLB
	□ white (RAL9016)	Ø 55 / L 230 / H 200	4000	966	0,4	648MZ-Z09401-DDWHB



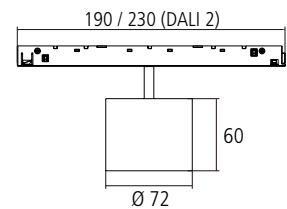
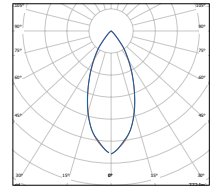
DESCRIPTION

The powerful Single Spotlight with Ø92mm diameter for the modular 48V Low Voltage promises a variety of different configurations options. The colour temperature is available in 2700K, 3000K and 4000K and can be adapted to your requirements with a colour rendering index >90. LINE48V Spotlight Inset SF is available in a powder-coated black and white, as well as in an elegant golden brushed finish. The light inserts will be connected to the profile by a simple click-in mechanism, which offers a high degree of flexibility without using any tools. To meet the requirements of professional lighting task, the Single Spotlight can be selected with on/off as well as with DALI drivers.



DIMMABLE	COLOUR	DIMENSIONS (mm)	COLOUR TEMP. (K)	LUMINOUS FLUX (lm)	WEIGHT (kg)	MATERIAL NUMBER	
☒	■ black (RAL9005)	Ø 96 / L 190 / H 141	2700	724	0,45	648SF-359271-OOBLB	
	□ white (RAL9016)	Ø 96 / L 190 / H 141	2700	724	0,45	648SF-359271-OOWHB	
	■ gold	Ø 96 / L 190 / H 141	2700	724	0,45	648SF-359271-OOBLG	
	■ black (RAL9005)	Ø 96 / L 190 / H 141	3000	770	0,45	648SF-359301-OOBLB	
	□ white (RAL9016)	Ø 96 / L 190 / H 141	3000	770	0,45	648SF-359301-OOWHW	
	■ gold	Ø 96 / L 190 / H 141	3000	770	0,45	648SF-359301-OOBLG	
☒	■ black (RAL9005)	Ø 96 / L 190 / H 141	4000	858	0,45	648SF-359401-OOBLB	
	□ white (RAL9016)	Ø 96 / L 190 / H 141	4000	858	0,45	648SF-359401-OOWHW	
	☒ DALI 2	■ black (RAL9005)	Ø 96 / L 230 / H 141	2700	724	0,45	648SF-359271-DDBLB
		□ white (RAL9016)	Ø 96 / L 230 / H 141	2700	724	0,45	648SF-359271-DDWHB
		■ gold	Ø 96 / L 230 / H 141	2700	724	0,45	648SF-359271-DDBLG
		■ black (RAL9005)	Ø 96 / L 230 / H 141	3000	770	0,45	648SF-359301-DDBLB
□ white (RAL9016)		Ø 96 / L 230 / H 141	3000	770	0,45	648SF-359301-DDWHW	
■ gold		Ø 96 / L 230 / H 141	3000	770	0,45	648SF-359301-DDBLG	
☒	■ black (RAL9005)	Ø 96 / L 230 / H 141	4000	858	0,45	648SF-359401-DDBLB	
	□ white (RAL9016)	Ø 96 / L 230 / H 141	4000	858	0,45	648SF-359401-DDWHW	

LINE48V | DOWNLIGHT SINGLE SPOT
WITH REFLECTOR



REFLECTOR TYPES

SPOT COLOUR: BLACK



specular
648DR-S



black
648DR-B



chrome black
648DR-C



white
648DR-W



gold
648DR-G

REFLECTOR TYPES

SPOT COLOUR: WHITE



specular
648DR-S



black
648DR-B



chrome black
648DR-C



white
648DR-W



gold
648DR-G



DESCRIPTION

The powerful and glare-free Single cylindrical Spotlight with Ø72mm diameter for the modular LINE48V Low Voltage promises a variety of different configurations options. The colour temperature is available in 2700K, 3000K and 4000K and can be adapted to your requirements with a colour rendering index >90. Due to the fact that the LED is installed deep in the housing, the LINE48V Spot Inset DS offers a high visual comfort and a glare-free illumination with a UGR value <19. Furthermore, five different coloured reflectors can be freely selected per model to create the perfect design element for an atmospheric ambience. The light inserts will be connected to the profile by a simple click-in mechanism, which offers a high degree of flexibility without using any tools. To meet the requirements of professional lighting task, the Single Spotlight can be selected with on/off as well as with DALI drivers.

LED	CRI	SDCM					
10 W	>90	≤3	>50.000 h	50°	48 V		

DIMMABLE	SPOT TYPE	COLOUR	DIMENSIONS (mm)	COLOUR TEMP. (K)	LUMINOUS FLUX (lm)	WEIGHT (kg)	MATERIAL NUMBER
NOT DIMMABLE							
	black (RAL9005)	■ specular	Ø 72 / L 190 / H 105	2700	735	0,45	648DS-509271-OOBLS
		■ black	Ø 72 / L 190 / H 105	2700	697	0,45	648DS-509271-OOBLB
		■ chrome black	Ø 72 / L 190 / H 105	2700	707	0,45	648DS-509271-OOBLC
		□ white	Ø 72 / L 190 / H 105	2700	728	0,45	648DS-509271-OOBLW
		■ gold	Ø 72 / L 190 / H 105	2700	730	0,45	648DS-509271-OOBLG
	white (RAL9016)	■ specular	Ø 72 / L 190 / H 105	2700	735	0,45	648DS-509271-OOWHS
		■ black	Ø 72 / L 190 / H 105	2700	697	0,45	648DS-509271-OOWHB
		■ chrome black	Ø 72 / L 190 / H 105	2700	707	0,45	648DS-509271-OOWHC
		□ white	Ø 72 / L 190 / H 105	2700	728	0,45	648DS-509271-OOWHW
		■ gold	Ø 72 / L 190 / H 105	2700	730	0,45	648DS-509271-OOWHG
	black (RAL9005)	■ specular	Ø 72 / L 190 / H 105	3000	782	0,45	648DS-509301-OOBLS
		■ black	Ø 72 / L 190 / H 105	3000	741	0,45	648DS-509301-OOBLB
		■ chrome black	Ø 72 / L 190 / H 105	3000	752	0,45	648DS-509301-OOBLC
		□ white	Ø 72 / L 190 / H 105	3000	774	0,45	648DS-509301-OOBLW
		■ gold	Ø 72 / L 190 / H 105	3000	777	0,45	648DS-509301-OOBLG
	white (RAL9016)	■ specular	Ø 72 / L 190 / H 105	3000	782	0,45	648DS-509301-OOWHS
		■ black	Ø 72 / L 190 / H 105	3000	741	0,45	648DS-509301-OOWHB
		■ chrome black	Ø 72 / L 190 / H 105	3000	752	0,45	648DS-509301-OOWHC
		□ white	Ø 72 / L 190 / H 105	3000	774	0,45	648DS-509301-OOWHW
		■ gold	Ø 72 / L 190 / H 105	3000	777	0,45	648DS-509301-OOWHG
black (RAL9005)	■ specular	Ø 72 / L 190 / H 105	4000	845	0,45	648DS-509401-OOBLS	
	■ black	Ø 72 / L 190 / H 105	4000	801	0,45	648DS-509401-OOBLB	
	■ chrome black	Ø 72 / L 190 / H 105	4000	813	0,45	648DS-509401-OOBLC	
	□ white	Ø 72 / L 190 / H 105	4000	837	0,45	648DS-509401-OOBLW	
	■ gold	Ø 72 / L 190 / H 105	4000	840	0,45	648DS-509401-OOBLG	
white (RAL9016)	■ specular	Ø 72 / L 190 / H 105	4000	845	0,45	648DS-509401-OOWHS	
	■ black	Ø 72 / L 190 / H 105	4000	801	0,45	648DS-509401-OOWHB	
	■ chrome black	Ø 72 / L 190 / H 105	4000	813	0,45	648DS-509401-OOWHC	
	□ white	Ø 72 / L 190 / H 105	4000	837	0,45	648DS-509401-OOWHW	
	■ gold	Ø 72 / L 190 / H 105	4000	840	0,45	648DS-509401-OOWHG	

LINE48V | DOWNLIGHT SINGLE SPOT

WITH REFLECTOR



DESCRIPTION

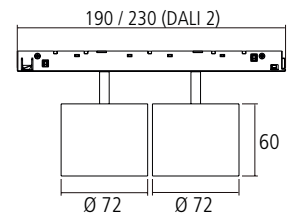
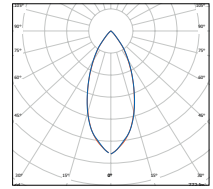
The powerful and glare-free Single cylindrical Spotlight with Ø72mm diameter for the modular LINE48V Low Voltage promises a variety of different configurations options. The colour temperature is available in 2700K, 3000K and 4000K and can be adapted to your requirements with a colour rendering index >90. Due to the fact that the LED is installed deep in the housing, the LINE48V Spot Inset DS offers a high visual comfort and a glare-free illumination with a UGR value <19. Furthermore, five different coloured reflectors can be freely selected per model to create the perfect design element for an atmospheric ambience. The light inserts will be connected to the profile by a simple click-in mechanism, which offers a high degree of flexibility without using any tools. To meet the requirements of professional lighting task, the Single Spotlight can be selected with on/off as well as with DALI drivers.

LED	CRI	SDCM					
10 W	>90	≤3	>50.000 h	50°	48 V	DALI 2	

DIMMABLE	SPOT TYPE	COLOUR	DIMENSIONS (mm)	COLOUR TEMP. (K)	LUMINOUS FLUX (lm)	WEIGHT (kg)	MATERIAL NUMBER
DIMMABLE DALI 2							
	black (RAL9005)	specular	Ø 72 / L 230 / H 105	2700	735	0,46	648DS-509271-DDBLS
		black	Ø 72 / L 230 / H 105	2700	697	0,46	648DS-509271-DDBLB
		chrome black	Ø 72 / L 230 / H 105	2700	707	0,46	648DS-509271-DDBLC
		white	Ø 72 / L 230 / H 105	2700	728	0,46	648DS-509271-DDBLW
		gold	Ø 72 / L 230 / H 105	2700	730	0,46	648DS-509271-DDBLG
	white (RAL9016)	specular	Ø 72 / L 230 / H 105	2700	735	0,46	648DS-509271-DDWHS
		black	Ø 72 / L 230 / H 105	2700	697	0,46	648DS-509271-DDWHB
		chrome black	Ø 72 / L 230 / H 105	2700	707	0,46	648DS-509271-DDWHC
		white	Ø 72 / L 230 / H 105	2700	728	0,46	648DS-509271-DDWHW
		gold	Ø 72 / L 230 / H 105	2700	730	0,46	648DS-509271-DDWHG
	black (RAL9005)	specular	Ø 72 / L 230 / H 105	3000	782	0,46	648DS-509301-DDBLS
		black	Ø 72 / L 230 / H 105	3000	741	0,46	648DS-509301-DDBLB
		chrome black	Ø 72 / L 230 / H 105	3000	752	0,46	648DS-509301-DDBLC
		white	Ø 72 / L 230 / H 105	3000	774	0,46	648DS-509301-DDBLW
		gold	Ø 72 / L 230 / H 105	3000	777	0,46	648DS-509301-DDBLG
	white (RAL9016)	specular	Ø 72 / L 230 / H 105	3000	782	0,46	648DS-509301-DDWHS
		black	Ø 72 / L 230 / H 105	3000	741	0,46	648DS-509301-DDWHB
		chrome black	Ø 72 / L 230 / H 105	3000	752	0,46	648DS-509301-DDWHC
		white	Ø 72 / L 230 / H 105	3000	774	0,46	648DS-509301-DDWHW
		gold	Ø 72 / L 230 / H 105	3000	777	0,46	648DS-509301-DDWHG
black (RAL9005)	specular	Ø 72 / L 230 / H 105	4000	845	0,46	648DS-509401-DDBLS	
	black	Ø 72 / L 230 / H 105	4000	801	0,46	648DS-509401-DDBLB	
	chrome black	Ø 72 / L 230 / H 105	4000	813	0,46	648DS-509401-DDBLC	
	white	Ø 72 / L 230 / H 105	4000	837	0,46	648DS-509401-DDBLW	
	gold	Ø 72 / L 230 / H 105	4000	840	0,46	648DS-509401-DDBLG	
white (RAL9016)	specular	Ø 72 / L 230 / H 105	4000	845	0,46	648DS-509401-DDWHS	
	black	Ø 72 / L 230 / H 105	4000	801	0,46	648DS-509401-DDWHB	
	chrome black	Ø 72 / L 230 / H 105	4000	813	0,46	648DS-509401-DDWHC	
	white	Ø 72 / L 230 / H 105	4000	837	0,46	648DS-509401-DDWHW	
	gold	Ø 72 / L 230 / H 105	4000	840	0,46	648DS-509401-DDWHG	



LINE48V | DOWNLIGHT DOUBLE SPOT
WITH REFLECTOR



REFLECTOR TYPES

SPOT COLOUR: BLACK



specular
648DR-S



black
648DR-B



chrome black
648DR-C



white
648DR-W



gold
648DR-G

REFLECTOR TYPES

SPOT COLOUR: WHITE



specular
648DR-S



black
648DR-B



chrome black
648DR-C



white
648DR-W



gold
648DR-G



DESCRIPTION

The powerful and glare-free Double cylindrical Spotlight with Ø72mm diameter for the modular LINE48V Low Voltage promises a variety of different configurations options. The colour temperature is available in 2700K, 3000K and 4000K and can be adapted to your requirements with a colour rendering index >90. Due to the fact that the LED is installed deep in the housing, the LINE48V Spot Inset DD offers a high visual comfort and a glare-free illumination with a UGR value <19. Furthermore, five different coloured reflectors can be freely selected per model to create the perfect design element for an atmospheric ambience. The light inserts will be connected to the profile by a simple click-in mechanism, which offers a high degree of flexibility without using any tools. To meet the requirements of professional lighting task, the Double Spotlight can be selected with on/off as well as with DALI drivers.



DIMMABLE	SPOT TYPE	COLOUR	DIMENSIONS (mm)	COLOUR TEMP. (K)	LUMINOUS FLUX (lm)	WEIGHT (kg)	MATERIAL NUMBER
NOT DIMMABLE							
	black (RAL9005)	specular	Ø 72 / L 190 / H 105	2700	2 x 736	0,68	648DD-509271-0OBLS
		black	Ø 72 / L 190 / H 105	2700	2 x 697	0,68	648DD-509271-0OBLB
		chrome black	Ø 72 / L 190 / H 105	2700	2 x 707	0,68	648DD-509271-0OBLC
		white	Ø 72 / L 190 / H 105	2700	2 x 728	0,68	648DD-509271-0OBLW
		gold	Ø 72 / L 190 / H 105	2700	2 x 730	0,68	648DD-509271-0OBLG
	white (RAL9016)	specular	Ø 72 / L 190 / H 105	2700	2 x 736	0,68	648DD-509271-0OWHS
		black	Ø 72 / L 190 / H 105	2700	2 x 697	0,68	648DD-509271-0OWHB
		chrome black	Ø 72 / L 190 / H 105	2700	2 x 707	0,68	648DD-509271-0OWHC
		white	Ø 72 / L 190 / H 105	2700	2 x 728	0,68	648DD-509271-0OWHW
		gold	Ø 72 / L 190 / H 105	2700	2 x 730	0,68	648DD-509271-0OWHG
	black (RAL9005)	specular	Ø 72 / L 190 / H 105	3000	2 x 782	0,68	648DD-509301-0OBLS
		black	Ø 72 / L 190 / H 105	3000	2 x 741	0,68	648DD-509301-0OBLB
		chrome black	Ø 72 / L 190 / H 105	3000	2 x 752	0,68	648DD-509301-0OBLC
		white	Ø 72 / L 190 / H 105	3000	2 x 774	0,68	648DD-509301-0OBLW
		gold	Ø 72 / L 190 / H 105	3000	2 x 777	0,68	648DD-509301-0OBLG
	white (RAL9016)	specular	Ø 72 / L 190 / H 105	3000	2 x 782	0,68	648DD-509301-0OWHS
		black	Ø 72 / L 190 / H 105	3000	2 x 741	0,68	648DD-509301-0OWHB
		chrome black	Ø 72 / L 190 / H 105	3000	2 x 752	0,68	648DD-509301-0OWHC
		white	Ø 72 / L 190 / H 105	3000	2 x 774	0,68	648DD-509301-0OWHW
		gold	Ø 72 / L 190 / H 105	3000	2 x 777	0,68	648DD-509301-0OWHG
black (RAL9005)	specular	Ø 72 / L 190 / H 105	4000	2 x 845	0,68	648DD-509401-0OBLS	
	black	Ø 72 / L 190 / H 105	4000	2 x 801	0,68	648DD-509401-0OBLB	
	chrome black	Ø 72 / L 190 / H 105	4000	2 x 813	0,68	648DD-509401-0OBLC	
	white	Ø 72 / L 190 / H 105	4000	2 x 837	0,68	648DD-509401-0OBLW	
	gold	Ø 72 / L 190 / H 105	4000	2 x 840	0,68	648DD-509401-0OBLG	
white (RAL9016)	specular	Ø 72 / L 190 / H 105	4000	2 x 845	0,68	648DD-509401-0OWHS	
	black	Ø 72 / L 190 / H 105	4000	2 x 801	0,68	648DD-509401-0OWHB	
	chrome black	Ø 72 / L 190 / H 105	4000	2 x 813	0,68	648DD-509401-0OWHC	
	white	Ø 72 / L 190 / H 105	4000	2 x 837	0,68	648DD-509401-0OWHW	
	gold	Ø 72 / L 190 / H 105	4000	2 x 840	0,68	648DD-509401-0OWHG	

LINE48V | DOWNLIGHT DOUBLE SPOT

WITH REFLECTOR



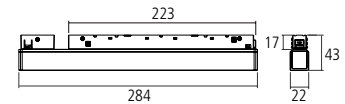
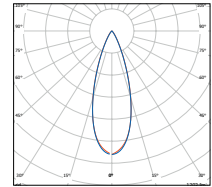
DESCRIPTION

The powerful and glare-free Double cylindrical Spotlight with Ø72mm diameter for the modular LINE48V Low Voltage promises a variety of different configurations options. The colour temperature is available in 2700K, 3000K and 4000K and can be adapted to your requirements with a colour rendering index >90. Due to the fact that the LED is installed deep in the housing, the LINE48V Spot Inset DD offers a high visual comfort and a glare-free illumination with a UGR value <19. Furthermore, five different coloured reflectors can be freely selected per model to create the perfect design element for an atmospheric ambience. The light inserts will be connected to the profile by a simple click-in mechanism, which offers a high degree of flexibility without using any tools. To meet the requirements of professional lighting task, the Double Spotlight can be selected with on/off as well as with DALI drivers.

LED	CRI	SDCM					
2 x 10 W	>90	≤3	<19	>50.000 h	50°	48 V	DALI 2

DIMMABLE	SPOT TYPE	COLOUR	DIMENSIONS (mm)	COLOUR TEMP. (K)	LUMINOUS FLUX (lm)	WEIGHT (kg)	MATERIAL NUMBER
DIMMABLE DALI 2							
	black (RAL9005)	specular	Ø 72 / L 230 / H 105	2700	2x736	0,68	648DD-509271-DDBLS
		black	Ø 72 / L 230 / H 105	2700	2x697	0,68	648DD-509271-DDBLB
		chrome black	Ø 72 / L 230 / H 105	2700	2x707	0,68	648DD-509271-DDBLC
		white	Ø 72 / L 230 / H 105	2700	2x728	0,68	648DD-509271-DDBLW
		gold	Ø 72 / L 230 / H 105	2700	2x730	0,68	648DD-509271-DDBLG
	white (RAL9016)	specular	Ø 72 / L 230 / H 105	2700	2x736	0,68	648DD-509271-DDWHS
		black	Ø 72 / L 230 / H 105	2700	2x697	0,68	648DD-509271-DDWHB
		chrome black	Ø 72 / L 230 / H 105	2700	2x707	0,68	648DD-509271-DDWHC
		white	Ø 72 / L 230 / H 105	2700	2x728	0,68	648DD-509271-DDWHW
		gold	Ø 72 / L 230 / H 105	2700	2x730	0,68	648DD-509271-DDWHG
	black (RAL9005)	specular	Ø 72 / L 230 / H 105	3000	2 x 782	0,68	648DD-509301-DDBLS
		black	Ø 72 / L 230 / H 105	3000	2 x 741	0,68	648DD-509301-DDBLB
		chrome black	Ø 72 / L 230 / H 105	3000	2 x 752	0,68	648DD-509301-DDBLC
		white	Ø 72 / L 230 / H 105	3000	2 x 774	0,68	648DD-509301-DDBLW
		gold	Ø 72 / L 230 / H 105	3000	2 x 777	0,68	648DD-509301-DDBLG
	white (RAL9016)	specular	Ø 72 / L 230 / H 105	3000	2 x 782	0,68	648DD-509301-DDWHS
		black	Ø 72 / L 230 / H 105	3000	2 x 741	0,68	648DD-509301-DDWHB
		chrome black	Ø 72 / L 230 / H 105	3000	2 x 752	0,68	648DD-509301-DDWHC
		white	Ø 72 / L 230 / H 105	3000	2 x 774	0,68	648DD-509301-DDWHW
		gold	Ø 72 / L 230 / H 105	3000	2 x 777	0,68	648DD-509301-DDWHG
black (RAL9005)	specular	Ø 72 / L 230 / H 105	4000	2 x 845	0,68	648DD-509401-DDBLS	
	black	Ø 72 / L 230 / H 105	4000	2 x 801	0,68	648DD-509401-DDBLB	
	chrome black	Ø 72 / L 230 / H 105	4000	2 x 813	0,68	648DD-509401-DDBLC	
	white	Ø 72 / L 230 / H 105	4000	2 x 837	0,68	648DD-509401-DDBLW	
	gold	Ø 72 / L 230 / H 105	4000	2 x 840	0,68	648DD-509401-DDBLG	
white (RAL9016)	specular	Ø 72 / L 230 / H 105	4000	2 x 845	0,68	648DD-509401-DDWHS	
	black	Ø 72 / L 230 / H 105	4000	2 x 801	0,68	648DD-509401-DDWHB	
	chrome black	Ø 72 / L 230 / H 105	4000	2 x 813	0,68	648DD-509401-DDWHC	
	white	Ø 72 / L 230 / H 105	4000	2 x 837	0,68	648DD-509401-DDWHW	
	gold	Ø 72 / L 230 / H 105	4000	2 x 840	0,68	648DD-509401-DDWHG	



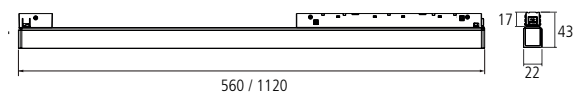
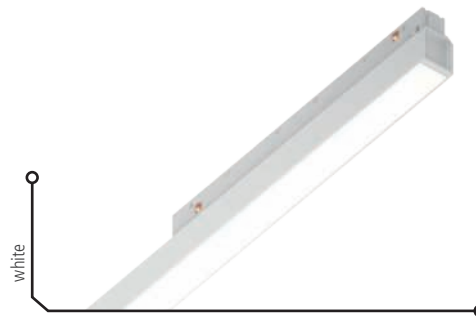
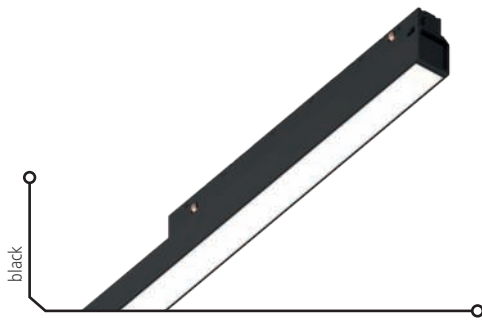
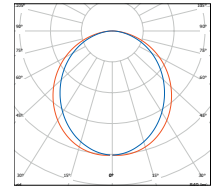


DESCRIPTION

The powerful Accent Light for the modular LINE48V Low Voltage promises a variety of different configurations options. The colour temperature is available in 2700K, 3000K and 4000K and can be adapted to your requirements with a colour rendering index >90. Due to the fact that the LED is installed deep in the housing, the LINE48V Accent Light LM offers a high visual comfort and a glare-free illumination with a UGR value <19. The light inserts will be connected to the profile by a simple click-in mechanism, which offers a high degree of flexibility without using any tools. To meet the requirements of professional lighting task, the Single Spotlight can be selected with on/off as well as with DALI drivers.

LED	CRI	SDCM			UGR		
13 W	>90	≤3	>50.000 h	<16	35°	48 V	

DIMMABLE	COLOUR	DIMENSIONS (mm)	COLOUR TEMP. (K)	LUMINOUS FLUX (lm)	WEIGHT (kg)	MATERIAL NUMBER
	■ black (RAL9005)	L 284 / W 22 / H 43	2700	1131	0,2	648LM-029271-OOBLB
	□ white (RAL9016)	L 284 / W 22 / H 43	2700	1131	0,2	648LM-029271-OOWHW
	■ black (RAL9005)	L 284 / W 22 / H 43	3000	1202	0,2	648LM-029301-OOBLB
	□ white (RAL9016)	L 284 / W 22 / H 43	3000	1202	0,2	648LM-029301-OOWHW
	■ black (RAL9005)	L 284 / W 22 / H 43	4000	1360	0,2	648LM-029401-OOBLB
	□ white (RAL9016)	L 284 / W 22 / H 43	4000	1360	0,2	648LM-029401-OOWHW
	■ black (RAL9005)	L 284 / W 22 / H 43	2700	1131	0,2	648LM-029271-DDBLB
	□ white (RAL9016)	L 284 / W 22 / H 43	2700	1131	0,2	648LM-029271-DDWHW
	■ black (RAL9005)	L 284 / W 22 / H 43	3000	1202	0,2	648LM-029301-DDBLB
	□ white (RAL9016)	L 284 / W 22 / H 43	3000	1202	0,2	648LM-029301-DDWHW
	■ black (RAL9005)	L 284 / W 22 / H 43	4000	1360	0,2	648LM-029401-DDBLB
	□ white (RAL9016)	L 284 / W 22 / H 43	4000	1360	0,2	648LM-029401-DDWHW

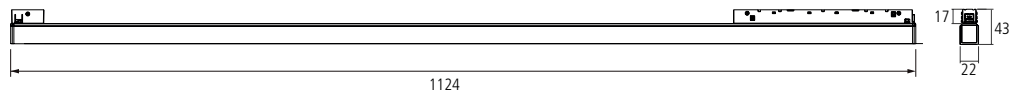
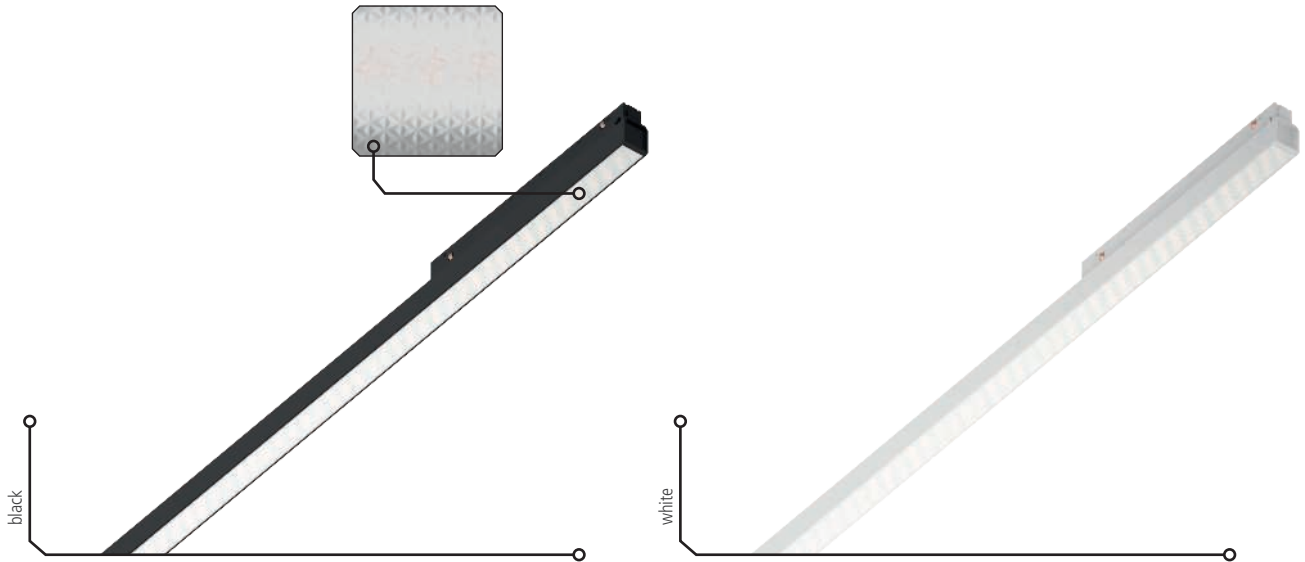
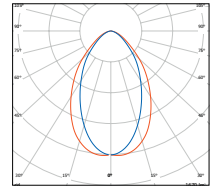


DESCRIPTION

The LINE48V General Light OM is available in two different lengths for the LINE48V Low Voltage system to ensure a seamless transition of general lighting. From a length of the General Light of 560mm with 13W to a length of 1120mm with 26W, homogenous lighting solutions can be created for a wide range of planning situations. The colour temperature is available in 2700K, 3000K and 4000K and can be adapted to your requirements with a colour rendering index >90. The light inserts will be connected to the profile by a simple click-in mechanism, which offers a high degree of flexibility without using any tools. To meet the requirements of professional lighting task, the Single Spotlight can be selected with on/off as well as with DALI drivers.



DIMMABLE	COLOUR	DIMENSIONS (mm)	COLOUR TEMP. (K)	LUMINOUS FLUX (lm)	POWER (W)	WEIGHT (kg)	MATERIAL NUMBER
	■ black (RAL9005)	L 560 / W 22 / H 43	2700	798	13	0,56	6480M-059271-0OBLO
	□ white (RAL9016)	L 560 / W 22 / H 43	2700	798	13	0,56	6480M-059271-0OWHO
	■ black (RAL9005)	L 560 / W 22 / H 43	3000	849	13	0,56	6480M-059301-0OBLO
	□ white (RAL9016)	L 560 / W 22 / H 43	3000	849	13	0,56	6480M-059301-0OWHO
	■ black (RAL9005)	L 560 / W 22 / H 43	4000	890	13	0,56	6480M-059401-0OBLO
	□ white (RAL9016)	L 560 / W 22 / H 43	4000	890	13	0,56	6480M-059401-0OWHO
	■ black (RAL9005)	L 1120 / W 22 / H 43	2700	1513	26	0,96	6480M-119271-0OBLO
	□ white (RAL9016)	L 1120 / W 22 / H 43	2700	1513	26	0,96	6480M-119271-0OWHO
	■ black (RAL9005)	L 1120 / W 22 / H 43	3000	1609	26	0,96	6480M-119301-0OBLO
	□ white (RAL9016)	L 1120 / W 22 / H 43	3000	1609	26	0,96	6480M-119301-0OWHO
	■ black (RAL9005)	L 1120 / W 22 / H 43	4000	1704	26	0,96	6480M-119401-0OBLO
	□ white (RAL9016)	L 1120 / W 22 / H 43	4000	1704	26	0,96	6480M-119401-0OWHO
	■ black (RAL9005)	L 560 / W 22 / H 43	2700	798	13	0,56	6480M-059271-0DBLO
	□ white (RAL9016)	L 560 / W 22 / H 43	2700	798	13	0,56	6480M-059271-0DWHO
	■ black (RAL9005)	L 560 / W 22 / H 43	3000	849	13	0,56	6480M-059301-0DBLO
	□ white (RAL9016)	L 560 / W 22 / H 43	3000	849	13	0,56	6480M-059301-0DWHO
	■ black (RAL9005)	L 560 / W 22 / H 43	4000	890	13	0,56	6480M-059401-0DBLO
	□ white (RAL9016)	L 560 / W 22 / H 43	4000	890	13	0,56	6480M-059401-0DWHO
	■ black (RAL9005)	L 1120 / W 22 / H 43	2700	1513	26	0,96	6480M-119271-0DBLO
	□ white (RAL9016)	L 1120 / W 22 / H 43	2700	1513	26	0,96	6480M-119271-0DWHO
	■ black (RAL9005)	L 1120 / W 22 / H 43	3000	1609	26	0,96	6480M-119301-0DBLO
	□ white (RAL9016)	L 1120 / W 22 / H 43	3000	1609	26	0,96	6480M-119301-0DWHO
	■ black (RAL9005)	L 1120 / W 22 / H 43	4000	1704	26	0,96	6480M-119401-0DBLO
	□ white (RAL9016)	L 1120 / W 22 / H 43	4000	1704	26	0,96	6480M-119401-0DWHO

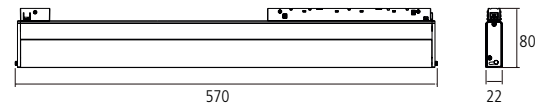
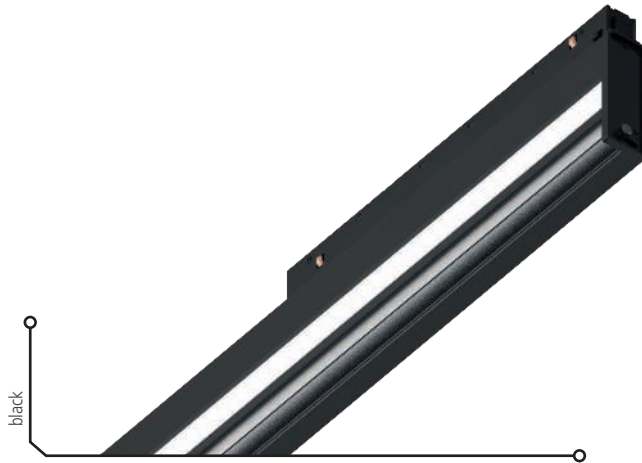
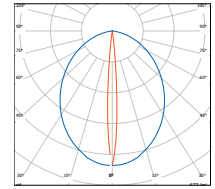


DESCRIPTION

The LINE48V General Light MM is available in the length of 1120mm for the LINE48V Low Voltage system to ensure a seamless transition of general lighting with micro prismatic diffusor. The colour temperature is available in 3000K and 4000K and can be adapted to your requirements with a colour rendering index >90. The light inserts will be connected to the profile by a simple click-in mechanism, which offers a high degree of flexibility without using any tools. To meet the requirements of professional lighting task, the Single Spotlight can be selected with on/off as well as with DALI drivers.

LED	CRI	SDCM				
26 W	>90	≤3	>50.000 h	65°	48 V	

DIMMABLE	COLOUR	DIMENSIONS (mm)	COLOUR TEMP. (K)	LUMINOUS FLUX (lm)	WEIGHT (kg)	MATERIAL NUMBER
	■ black (RAL9005)	L 1120 / W 22 / H 43	3000	1670	0,96	648MM-119301-OOBLM
	□ white (RAL9016)	L 1120 / W 22 / H 43	3000	1670	0,96	648MM-119301-OOWHM
	■ black (RAL9005)	L 1120 / W 22 / H 43	4000	1743	0,96	648MM-119401-OOBLM
	□ white (RAL9016)	L 1120 / W 22 / H 43	4000	1743	0,96	648MM-119401-OOWHM
	■ black (RAL9005)	L 1120 / W 22 / H 43	3000	1670	0,96	648MM-119301-DDBLM
	□ white (RAL9016)	L 1120 / W 22 / H 43	3000	1670	0,96	648MM-119301-DDWHM
	■ black (RAL9005)	L 1120 / W 22 / H 43	4000	1743	0,96	648MM-119401-DDBLM
	□ white (RAL9016)	L 1120 / W 22 / H 43	4000	1743	0,96	648MM-119401-DDWHM

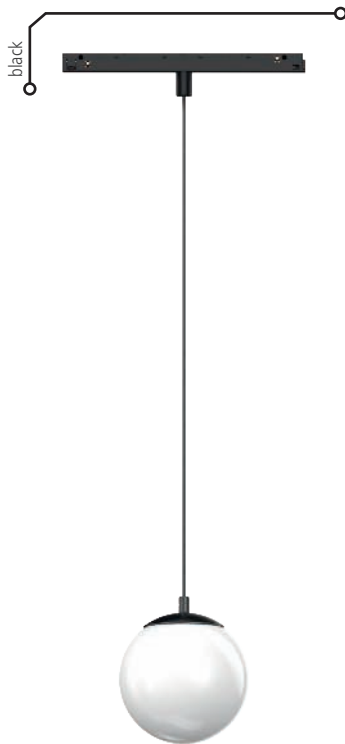
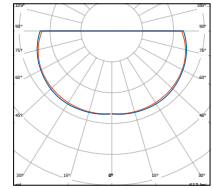


DESCRIPTION

The LINE48V Wall Washer provides a lot of flexibility within the length of 570mm. The modern design of the Wall Washer allows the output angle of the light to be adjusted by up to 13°. The light inserts will be connected to the profile by a simple click-in mechanism, which offers a high degree of flexibility without using any tools. To meet the requirements of professional lighting task, the Single Spotlight can be selected with on/off as well as with DALI drivers.

- LED**
13 W
- CRI**
>90
- SDCM**
≤3
- >50.000 h
- asymmetric
- 48 V

DIMMABLE	COLOUR	DIMENSIONS (mm)	COLOUR TEMP. (K)	LUMINOUS FLUX (lm)	WEIGHT (kg)	MATERIAL NUMBER
	■ black (RAL9005)	L 570 / W 22 / H 80	2700	633	0,7	648AM-059271-OOBLA
	□ white (RAL9016)	L 570 / W 22 / H 80	2700	633	0,7	648AM-059271-OOWHA
	■ black (RAL9005)	L 570 / W 22 / H 80	3000	786	0,7	648AM-059301-OOBLA
	□ white (RAL9016)	L 570 / W 22 / H 80	3000	786	0,7	648AM-059301-OOWHA
	■ black (RAL9005)	L 570 / W 22 / H 80	4000	801	0,7	648AM-059401-OOBLA
	□ white (RAL9016)	L 570 / W 22 / H 80	4000	801	0,7	648AM-059401-OOWHA
	■ black (RAL9005)	L 570 / W 22 / H 80	2700	633	0,71	648AM-059271-DOBBLA
	□ white (RAL9016)	L 570 / W 22 / H 80	2700	633	0,71	648AM-059271-DDWHA
	■ black (RAL9005)	L 570 / W 22 / H 80	3000	786	0,71	648AM-059301-DOBBLA
	□ white (RAL9016)	L 570 / W 22 / H 80	3000	786	0,71	648AM-059301-DDWHA
	■ black (RAL9005)	L 570 / W 22 / H 80	4000	801	0,71	648AM-059401-DOBBLA
	□ white (RAL9016)	L 570 / W 22 / H 80	4000	801	0,71	648AM-059401-DDWHA



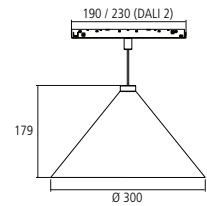
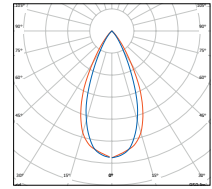
DESCRIPTION

The decorative glass ball inset for the LINE48V Low Voltage System offers a minimalist, elegant design. LINE48V Piedale PP is available with a pendant length of 2000mm, which can be easily shortened afterwards using the special mechanism in the adapter. The light inserts will be connected to the profile by a simple click-in mechanism, which offers a high degree of flexibility without using any tools. To meet the requirements of professional lighting task, the Single Spotlight can be selected with on/off as well as with DALI drivers.



DIMMABLE	COLOUR	DIMENSIONS (mm)	PENDULUM LENGTH (mm)	COLOUR TEMP. (K)	LUMINOUS FLUX (lm)	WEIGHT (kg)	MATERIAL NUMBER
	■ black (RAL9005)	Ø 120 / L 190	2000	2700	452	0,38	648PP-019271-OOBLO
	□ white (RAL9016)	Ø 120 / L 190	2000	2700	452	0,38	648PP-019271-OOWHO
	■ black (RAL9005)	Ø 120 / L 190	2000	3000	518	0,38	648PP-019301-OOBLO
	□ white (RAL9016)	Ø 120 / L 190	2000	3000	518	0,38	648PP-019301-OOWHO
	■ black (RAL9005)	Ø 120 / L 190	2000	4000	551	0,38	648PP-019401-OOBLO
	□ white (RAL9016)	Ø 120 / L 190	2000	4000	551	0,38	648PP-019401-OOWHO
	■ black (RAL9005)	Ø 120 / L 230	2000	2700	452	0,38	648PP-019271-DBBLO
	□ white (RAL9016)	Ø 120 / L 230	2000	2700	452	0,38	648PP-019271-DDWHO
	■ black (RAL9005)	Ø 120 / L 230	2000	3000	518	0,38	648PP-019301-DBBLO
	□ white (RAL9016)	Ø 120 / L 230	2000	3000	518	0,38	648PP-019301-DDWHO
	■ black (RAL9005)	Ø 120 / L 230	2000	4000	551	0,38	648PP-019401-DBBLO
	□ white (RAL9016)	Ø 120 / L 230	2000	4000	551	0,38	648PP-019401-DDWHO





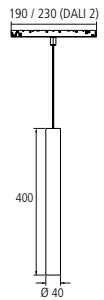
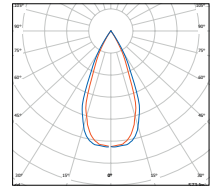
DESCRIPTION

The decorative pendant inset for the LINE48V Low Voltage System offers a high quality, elegant design. LINE48V Canalello is available with a pendant length of 2000mm, which can be easily shortened afterwards using the special mechanism in the adapter. The light inserts will be connected to the profile by a simple click-in mechanism, which offers a high degree of flexibility without using any tools. To meet the requirements of professional lighting task, the Single Spotlight can be selected with on/off as well as with DALI drivers.

LED	CRI	SDCM					
18 W	>90	≤3	>50.000 h	<19	180°	48 V	

DIMMABLE	COLOUR	DIMENSIONS (mm)	PENDULUM LENGTH (mm)	COLOUR TEMP. (K)	LUMINOUS FLUX (lm)	WEIGHT (kg)	MATERIAL NUMBER
	■ black (RAL9005)	Ø 300 / L 190 / H 179	2000	2700	893	0,6	648PC-039271-OOBLB
	□ white (RAL9016)	Ø 300 / L 190 / H 179	2000	2700	893	0,6	648PC-039271-OOWHW
	■ black (RAL9005)	Ø 300 / L 190 / H 179	2000	3000	951	0,6	648PC-039301-OOBLB
	□ white (RAL9016)	Ø 300 / L 190 / H 179	2000	3000	951	0,6	648PC-039301-OOWHW
	■ black (RAL9005)	Ø 300 / L 190 / H 179	2000	4000	1163	0,6	648PC-039401-OOBLB
	□ white (RAL9016)	Ø 300 / L 190 / H 179	2000	4000	1163	0,6	648PC-039401-OOWHW
	■ black (RAL9005)	Ø 300 / L 230 / H 179	2000	2700	893	0,6	648PC-039271-DDBLB
	□ white (RAL9016)	Ø 300 / L 230 / H 179	2000	2700	893	0,6	648PC-039271-DDWHW
	■ black (RAL9005)	Ø 300 / L 230 / H 179	2000	3000	951	0,6	648PC-039301-DDBLB
	□ white (RAL9016)	Ø 300 / L 230 / H 179	2000	3000	951	0,6	648PC-039301-DDWHW
	■ black (RAL9005)	Ø 300 / L 230 / H 179	2000	4000	1163	0,6	648PC-039401-DDBLB
	□ white (RAL9016)	Ø 300 / L 230 / H 179	2000	4000	1163	0,6	648PC-039401-DDWHW



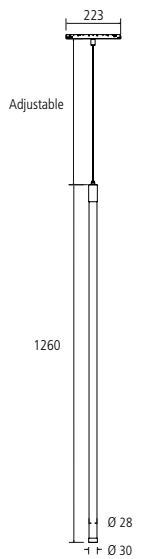
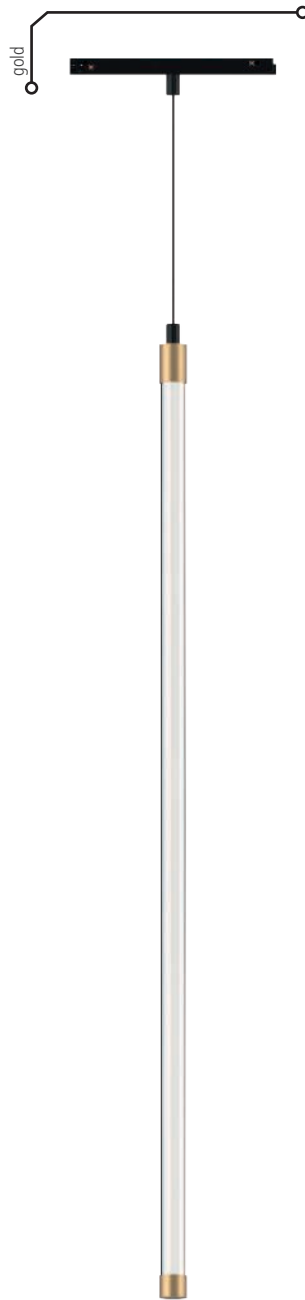


DESCRIPTION

The minimalist designed pendant Tortoreto for LINE48V ensure excellent accent lighting with the best light quality. With a diameter of Ø40mm, different shapes and sizes of changing objects can be put into the right light. The low-seat LED inside the pendant lamp provides a high level of visual comfort with a UGR value of <19. The light inserts will be connected to the profile by a simple click-in mechanism, which offers a high degree of flexibility without using any tools. To meet the requirements of professional lighting task, the Single Spotlight can be selected with on/off as well as with DALI drivers.

LED	CRI	SDCM				
12 W	>90	≤3	>50.000 h	<19	45°	48 V

DIMMABLE	COLOUR	DIMENSIONS (mm)	PENDULUM LENGTH (mm)	COLOUR TEMP. (K)	LUMINOUS FLUX (lm)	WEIGHT (kg)	MATERIAL NUMBER
	■ black (RAL9005)	Ø 40 / L 190 / H 400	2000	2700	539	0,65	648PT-309271-OOBLB
	□ white (RAL9016)	Ø 40 / L 190 / H 400	2000	2700	539	0,65	648PT-309271-OOWHW
	■ black (RAL9005)	Ø 40 / L 190 / H 400	2000	3000	573	0,65	648PT-309301-OOBLB
	□ white (RAL9016)	Ø 40 / L 190 / H 400	2000	3000	573	0,65	648PT-309301-OOWHW
	■ black (RAL9005)	Ø 40 / L 190 / H 400	2000	4000	642	0,65	648PT-309401-OOBLB
	□ white (RAL9016)	Ø 40 / L 190 / H 400	2000	4000	642	0,65	648PT-309401-OOWHW
	■ black (RAL9005)	Ø 40 / L 230 / H 400	2000	2700	539	0,65	648PT-309271-DDBLB
	□ white (RAL9016)	Ø 40 / L 230 / H 400	2000	2700	539	0,65	648PT-309271-DDWHW
	■ black (RAL9005)	Ø 40 / L 230 / H 400	2000	3000	573	0,65	648PT-309301-DDBLB
	□ white (RAL9016)	Ø 40 / L 230 / H 400	2000	3000	573	0,65	648PT-309301-DDWHW
	■ black (RAL9005)	Ø 40 / L 230 / H 400	2000	4000	642	0,65	648PT-309401-DDBLB
	□ white (RAL9016)	Ø 40 / L 230 / H 400	2000	4000	642	0,65	648PT-309401-DDWHW

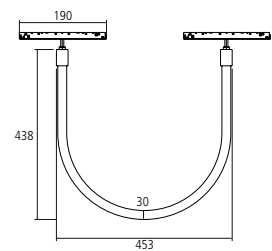


DESCRIPTION

The minimalist designed neon flex pendant luminaire for LINE48V ensure excellent accent lighting with a 360° light emission. The light inserts will be connected to the profile by a simple click-in mechanism, which offers a high degree of flexibility without using any tools.

LED	CRI	SDCM				
19 W	>90	≤3	>50.000 h	180°	48 V	

DIMMABLE	COLOUR	DIMENSIONS (mm)	PENDULUM LENGTH (mm)	COLOUR TEMP. (K)	LUMINOUS FLUX (lm)	WEIGHT (kg)	MATERIAL NUMBER
	gold	Ø 30 / L 223 / H 1260	2000	2700	1980	1,25	648RS-059271-OOBLG
	gold	Ø 30 / L 223 / H 1260	2000	3000	2273	1,25	648RS-059301-OOBLG
	gold	Ø 30 / L 223 / H 1260	2000	4000	2418	1,25	648RS-059401-OOBLG



DESCRIPTION

The minimalist designed neon flex pendant luminaire for LINE48V ensure excellent accent lighting with a 360° light emission. The light inserts will be connected to the profile by a simple click-in mechanism, which offers a high degree of flexibility without using any tools.

LED	CRI	SDCM				
19 W	>90	≤3	>50.000 h	180°	48 V	

DIMMABLE	COLOUR	DIMENSIONS (mm)	COLOUR TEMP. (K)	LUMINOUS FLUX (lm)	WEIGHT (kg)	MATERIAL NUMBER
	■ gold	Ø 30 / L 190 / H 1200	2700	1980	1,25	648RU-309271-OOBLG
	■ gold	Ø 30 / L 190 / H 1200	3000	2273	1,25	648RU-309301-OOBLG
	■ gold	Ø 30 / L 190 / H 1200	4000	2418	1,25	648RU-309401-OOBLG

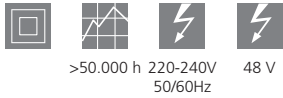


LINE48V | DRIVER IN-TRACK 48VDC 100W

DRIVER



DESCRIPTION



>50.000 h 220-240V 50/60Hz 48 V

DIMMABLE	COLOUR	DIMENSIONS (mm)	CABLE LENGTH (mm)	POWER (W)	OUTPUT VOLTAGE (Vdc)	WEIGHT (kg)	MATERIAL NUMBER
	■ black (RAL9005)	L 297,5 / W 16 / H 19	250	100	48	0,14	69351
	□ white (RAL9016)	L 297,5 / W 16 / H 19	250	100	48	0,14	69353
	■ black (RAL9005)	L 297,5 / W 16 / H 19	3000	100	48	0,14	69405
	□ white (RAL9016)	L 297,5 / W 16 / H 19	3000	100	48	0,14	69406
	■ black (RAL9005)	L 297,5 / W 16 / H 19	250	100	48	0,14	69352
	□ white (RAL9016)	L 297,5 / W 16 / H 19	250	100	48	0,14	69354
	■ black (RAL9005)	L 297,5 / W 16 / H 19	3000	100	48	0,14	69409
	□ white (RAL9016)	L 297,5 / W 16 / H 19	3000	100	48	0,14	69411

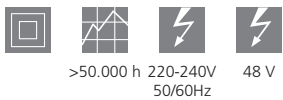
*2 EXTRA LEADS FOR DALI THROUGH WIRING

LINE48V | DRIVER IN-TRACK 48VDC 250W

DRIVER



DESCRIPTION



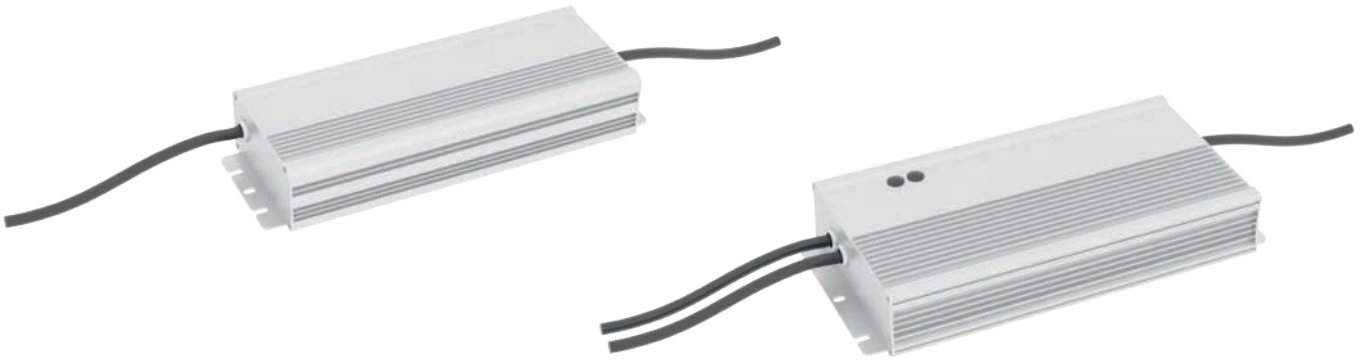
>50.000 h 220-240V 50/60Hz 48 V

DIMMABLE	COLOUR	DIMENSIONS (mm)	CABLE LENGTH (mm)	POWER (W)	OUTPUT VOLTAGE (Vdc)	WEIGHT (kg)	MATERIAL NUMBER
	■ black (RAL9005)	L 268 / W 22 / H 43,5	250	250	48	0,32	69355
	□ white (RAL9016)	L 268 / W 22 / H 43,5	250	250	48	0,32	69357
	■ black (RAL9005)	L 268 / W 22 / H 43,5	3000	250	48	0,32	69407
	□ white (RAL9016)	L 268 / W 22 / H 43,5	3000	250	48	0,32	69408
	■ black (RAL9005)	L 268 / W 22 / H 43,5	250	250	48	0,32	69356
	□ white (RAL9016)	L 268 / W 22 / H 43,5	250	250	48	0,32	69358
	■ black (RAL9005)	L 268 / W 22 / H 43,5	3000	250	48	0,32	69412
	□ white (RAL9016)	L 268 / W 22 / H 43,5	3000	250	48	0,32	69413

*2 EXTRA LEADS FOR DALI THROUGH WIRING

LINE48V | MEANWELL / HLG-320/480H-48A

DRIVER



DESCRIPTION



DIMMABLE	DRIVER NAME	COLOUR	DIMENSIONS (mm)	CABLE LENGTH (mm)	POWER (W)	OUTPUT VOLTAGE (Vdc)	WEIGHT (kg)	MATERIAL NUMBER
	HLG-320H-48A	■ silver (aluminium)	L 252 / W 90 / H 44	300	320	48	1,88	69361
	HLG-480H-48A	■ silver (aluminium)	L 262 / W 125 / H 19	300	480	48	2,80	69362

LINE48V | OPTO-INSULATED REPEATER DALI COMPATIBLE

SIGNAL CONTROLLER



DESCRIPTION

The device is a signal repeater and regenerator compatible with DALI protocol including an integrated power supply for the output line. It's used to extend or/and to electrically isolate the digital input line from the output line. Thanks to the integrated power supply, there is no need of a power supply for the output DALI compatible line.



DIMMABLE	COLOUR	DIMENSIONS (mm)	INPUT VOLTAGE (Vdc)	OUTPUT VOLTAGE (Vdc)	OUTPUT CURRENT DALI (mA)	WEIGHT (kg)	MATERIAL NUMBER
	□ white	L 172 / W 42 / H 25	24 / 48	24 / 48	250	0,09	69359



LEGEND | PICTOGRAMS


OVERVIEW

SOCKETS

 LED

FUNCTIONS & COMFORT


 CRI Colour Rendering Index

 SDCM MacADAM Step

 lifetime


 dimmable

 not dimmable


 UGR unified Glare Rating


 beam angle

 swiveling

 rotatable

 cutout (in mm)

 mounting Depth (in mm)

 installation width (in mm)

 voltage

PROTECTION RATING


The protection rating ensures the operational safety of luminaires. The first number specifies the extent of the protection against the ingress of foreign bodies; the second number identifies the humidity protection grade. All luminaires in this catalogue are at least protected with the rating IP20 – a higher rating is specified in the information box of the luminaire.


 IP65

PROTECTION CLASS

The protection class indicates to what extent the luminaire is protected against electric shock. All luminaires in this catalogue are at least protected with the protection class 1 - a higher class is specified in the information box of the respective luminaire.

 protection class 1: protective earthing

 protection class 2: protective insulation

 protection class 3: protective low voltage

IMPRESSUM

All previous catalogues and price lists are no longer valid with the issue of this catalogue.

Errors, misprints, model and price changes and technical modifications are reserved. We deliver based on our terms of delivery and payment. Our products comply with the European light norm EN60598. Products with the ENEC test mark are conforming to the guide line 2006/95/EG. Products with additional safety remarks (e.g protection class, IP) are identified within the product family with the relevant symbol and number.

The content of this catalogue is protected under copyright law for EGLO Leuchten GmbH. All rights reserved.

Our specific written consent must be obtained before using any illustrations and texts. The pictures are 4C prints and may differ from the original. The product pictures and ambiances in this catalogue can deviate from reality, and they do not necessarily concur with the usual application of the product. EGLO does not assume liability for the correctness, completeness or the application depiction of the products and/or the product information.

- Design, layout and composition:
EGLO Leuchten GmbH, A-6136 Pill - AUSTRIA
- Print: Samson Druck GmbH,
5581 St. Margarethen - AUSTRIA
- Pictures: EGLO, Adobe Stock, istockphoto.com

07-2024



EGLO Leuchten GmbH
Heiligkreuz 22
A-6136 Pill
Austria
Tel. +43 (0) 5242 6996
Fax +43 (0) 5242 6996-972
info@eglo.com
professional.eglo.com

W3751

my light | my style